

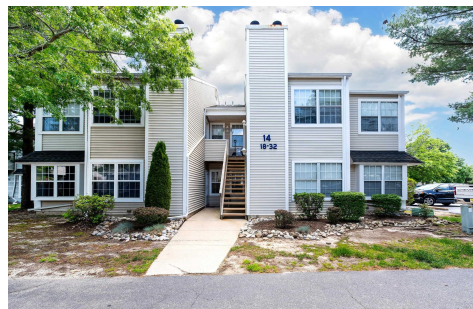


Berger Realty, Inc.  
3160 Asbury Avenue  
Ocean City, NJ 08226  
1-877-237-4371 / 609-399-0076  
info@bergerrealty.com



32 Malibu, 32, Galloway Township, NJ, 08205

Price \$165,000.00



#### PROPERTY DETAILS

Total Rooms	4
Bedrooms	1
Baths Full	1
Baths Half	0
Year Built	
Type	Condo
Block Number	1173
Listing #	596478
Taxes	2297.00

#### COMMENTS

Welcome To Fax Chase at Smithville! Open and Spacious 1 BR 1 Bath UPPER LEVEL Condo located in the Heart of the Highly Desired and Historic Towne of Smithville. This Condominium Features: Cathedral Ceilings, Built-In Wood Burning Fireplace, Open Concept, Living Room, In Unit Washer/Dryer, Ample Parking Outside And Low Taxes. Amazing HOA Amenities Including 2 Community P...

#### PROPERTY FEATURES

ParkingGarage	Heating	Water	Sewer
None	Gas-Natural	Public Water	Public Sewer

#### CONTACT



Ask for Cynthia Balles  
Berger Realty Inc  
3160 Asbury Avenue, Ocean City  
Call: 609-432-2524  
Email to: cyn@bergerrealty.com

Scan to see Property page.



Berger Realty, Inc.  
3160 Asbury Avenue  
Ocean City, NJ 08226  
1-877-237-4371 / 609-399-0076  
info@bergerrealty.com



32 Malibu, 32, Galloway Township, NJ, 08205

Price \$165,000.00



#### PROPERTY DETAILS

Total Rooms	4
Bedrooms	1
Baths Full	1
Baths Half	0
Year Built	
Type	Condo
Block Number	1173
Listing #	596478
Taxes	2297.00

#### COMMENTS

Welcome To Fax Chase at Smithville! Open and Spacious 1 BR 1 Bath UPPER LEVEL Condo located in the Heart of the Highly Desired and Historic Towne of Smithville. This Condominium Features: Cathedral Ceilings, Built-In Wood Burning Fireplace, Open Concept, Living Room, In Unit Washer/Dryer, Ample Parking Outside And Low Taxes. Amazing HOA Amenities Including 2 Community P...

#### PROPERTY FEATURES

ParkingGarage	Heating	Water	Sewer
None	Gas-Natural	Public Water	Public Sewer

#### CONTACT



Ask for Cynthia Balles  
Berger Realty Inc  
3160 Asbury Avenue, Ocean City  
Call: 609-432-2524  
Email to: cyn@bergerrealty.com

Scan to see Property page.

