

Berger Realty

Since 1926



Berger Realty, Inc.
3160 Asbury Avenue
Ocean City, NJ 08226
1-877-237-4371 / 609-399-0076
info@bergerrealty.com



292 Wheat, Vineland, NJ, 08360

Price \$130,000.00

PROPERTY DETAILS

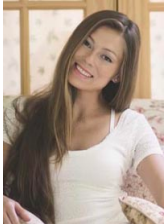
| | |
|--------------|--------|
| Total Rooms | 0 |
| Bedrooms | 0 |
| Baths Full | 0 |
| Baths Half | 0 |
| Year Built | |
| Type | |
| Block Number | 173 |
| Listing # | 596472 |
| Taxes | 392.00 |

COMMENTS

BUILDER ALERT – 6 Potential Lots with Preliminary Subdivision Approval! Incredible opportunity to develop up to 6 buildable lots in Buena Boro. Preliminary subdivision approval is in place, and the access road has already been deeded to the Borough. Remaining steps include Atlantic County Soil Conservation approval and posting a performance bond. Final subdivision approv...

PROPERTY FEATURES

CONTACT



Ask for Margarita Kobilianets
Berger Realty Inc
3160 Asbury Avenue, Ocean City
Call: 609-674-3417
Email to: mak@bergerrealty.com

Scan to see Property page.



Berger Realty

Since 1926



Berger Realty, Inc.
3160 Asbury Avenue
Ocean City, NJ 08226
1-877-237-4371 / 609-399-0076
info@bergerrealty.com



292 Wheat, Vineland, NJ, 08360

Price \$130,000.00

PROPERTY DETAILS

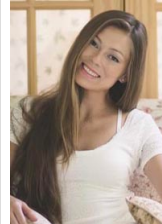
| | |
|--------------|--------|
| Total Rooms | 0 |
| Bedrooms | 0 |
| Baths Full | 0 |
| Baths Half | 0 |
| Year Built | |
| Type | |
| Block Number | 173 |
| Listing # | 596472 |
| Taxes | 392.00 |

COMMENTS

BUILDER ALERT – 6 Potential Lots with Preliminary Subdivision Approval! Incredible opportunity to develop up to 6 buildable lots in Buena Boro. Preliminary subdivision approval is in place, and the access road has already been deeded to the Borough. Remaining steps include Atlantic County Soil Conservation approval and posting a performance bond. Final subdivision approv...

PROPERTY FEATURES

CONTACT



Ask for Margarita Kobilianets
Berger Realty Inc
3160 Asbury Avenue, Ocean City
Call: 609-674-3417
Email to: mak@bergerrealty.com

Scan to see Property page.

