



Berger Realty, Inc.
3160 Asbury Avenue
Ocean City, NJ 08226
1-877-237-4371 / 609-399-0076
info@bergerrealty.com



2322 Murray, Atlantic City, NJ, 08401

Price \$399,000.00



PROPERTY DETAILS

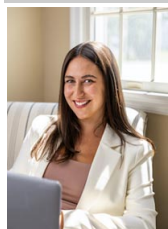
Total Rooms	
Bedrooms	0
Baths Full	0
Baths Half	0
Year Built	
Type	
Block Number	702
Listing #	596460
Taxes	4415.00

COMMENTS

Corner water front and direct access to the ocean. **DOUBLE** lot rare to find .One of the kind, on the open bay in the most desirable location in Venice park. 5+ boat slip possible Multiple buildable townhomes with variance & approvals....

PROPERTY FEATURES

CONTACT



Ask for Lauren Greiner
Berger Realty Inc
3160 Asbury Avenue, Ocean City
Call: 609-602-5960
Email to: lmg@bergerrealty.com

Scan to see Property page.



Berger Realty, Inc.
3160 Asbury Avenue
Ocean City, NJ 08226
1-877-237-4371 / 609-399-0076
info@bergerrealty.com



2322 Murray, Atlantic City, NJ, 08401

Price \$399,000.00



PROPERTY DETAILS

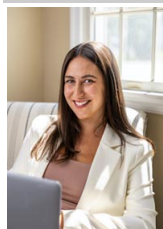
Total Rooms	
Bedrooms	0
Baths Full	0
Baths Half	0
Year Built	
Type	
Block Number	702
Listing #	596460
Taxes	4415.00

COMMENTS

Corner water front and direct access to the ocean. **DOUBLE** lot rare to find .One of the kind, on the open bay in the most desirable location in Venice park. 5+ boat slip possible Multiple buildable townhomes with variance & approvals....

PROPERTY FEATURES

CONTACT



Ask for Lauren Greiner
Berger Realty Inc
3160 Asbury Avenue, Ocean City
Call: 609-602-5960
Email to: lmg@bergerrealty.com

Scan to see Property page.

