

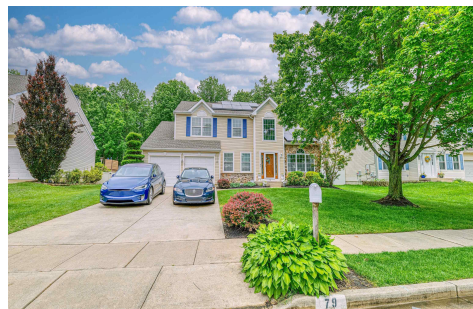


Berger Realty, Inc.
3160 Asbury Avenue
Ocean City, NJ 08226
1-877-237-4371 / 609-399-0076
info@bergerrealty.com



79 Annapolis Dr, Sicklerville, NJ, 08081

Price \$498,000.00



PROPERTY DETAILS

Total Rooms	8
Bedrooms	3
Baths Full	2
Baths Half	1
Year Built	2000
Type	Single Family
Block Number	18202
Listing #	596372
Taxes	10402.00

COMMENTS

This standout Wye Oak Colonial offers a rare blend of elegance, comfort, and functionality—set on a pristine, beautifully landscaped lot with a park-like lawn that makes a striking first impression. Step inside to a stunning cathedral-style foyer that introduces the open, modern layout designed to complement today's lifestyle. Throughout the main level and master suite...

PROPERTY FEATURES

Exterior	OutsideFeatures	ParkingGarage	OtherRooms
Stone	Curbs	Attached Garage	Dining Area
Vinyl	Deck	Two Car	Dining Room
	Fenced Yard		Eat In Kitchen
	Pool-Above Ground		Pantry
	Porch		
	Shed		
	Sprinkler System		
InteriorFeatures	AppliancesIncluded	Basement	Heating
Bar	Dishwasher	6 Ft. or More Head	Gas-Natural
Carbon Monoxide	Dryer	Room	Heat Pump
Detector	Gas Stove	Full	
Cathedral Ceiling	Microwave	Inside Entrance	
Walk In Closet	Washer	Partially Finished	
Cooling	Water	Sewer	
Central	Public	Public Sewer	

CONTACT



Ask for Graham Ginn
Berger Realty Inc
3160 Asbury Avenue, Ocean City
Call: 609-602-4884
Email to: gmg@bergerrealty.com
https://www.ocnj.com

Scan to view property page.

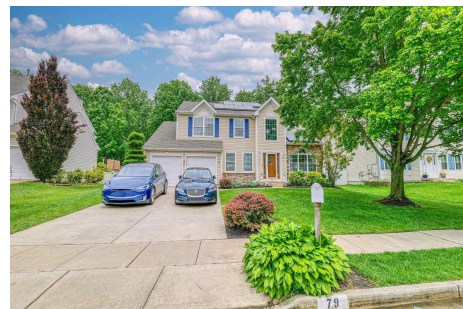


Berger Realty, Inc.
3160 Asbury Avenue
Ocean City, NJ 08226
1-877-237-4371 / 609-399-0076
info@bergerrealty.com



79 Annapolis Dr, Sicklerville, NJ, 08081

Price \$498,000.00



PROPERTY DETAILS

Total Rooms	8
Bedrooms	3
Baths Full	2
Baths Half	1
Year Built	2000
Type	Single Family
Block Number	18202
Listing #	596372
Taxes	10402.00

COMMENTS

This standout Wye Oak Colonial offers a rare blend of elegance, comfort, and functionality—set on a pristine, beautifully landscaped lot with a park-like lawn that makes a striking first impression. Step inside to a stunning cathedral-style foyer that introduces the open, modern layout designed to complement today's lifestyle. Throughout the main level and master suite...

PROPERTY FEATURES

Exterior	OutsideFeatures	ParkingGarage	OtherRooms
Stone	Curbs	Attached Garage	Dining Area
Vinyl	Deck	Two Car	Dining Room
	Fenced Yard		Eat In Kitchen
	Pool-Above Ground		Pantry
	Porch		
	Shed		
	Sprinkler System		
InteriorFeatures	AppliancesIncluded	Basement	Heating
Bar	Dishwasher	6 Ft. or More Head	Gas-Natural
Carbon Monoxide	Dryer	Room	Heat Pump
Detector	Gas Stove	Full	
Cathedral Ceiling	Microwave	Inside Entrance	
Walk In Closet	Washer	Partially Finished	
Cooling	Water	Sewer	
Central	Public	Public Sewer	

CONTACT



Ask for Graham Ginn
Berger Realty Inc
3160 Asbury Avenue, Ocean City
Call: 609-602-4884
Email to: gmg@bergerrealty.com
https://www.ocnj.com

Scan to view property page.

