



Berger Realty, Inc.
3160 Asbury Avenue
Ocean City, NJ 08226
1-877-237-4371 / 609-399-0076
info@bergerrealty.com

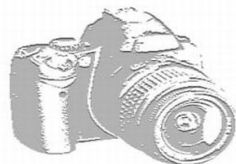


2110 Riverside Dr, Atlantic City, NJ, 08401

Price \$140,000.00

PHOTO NOT AVAILABLE

PROPERTY DETAILS



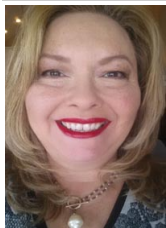
Total Rooms	
Bedrooms	0
Baths Full	0
Baths Half	0
Year Built	
Type	
Block Number	714
Listing #	596223
Taxes	3200.00

COMMENTS

Unparalleled Bayfront Lot in Atlantic City Discover the perfect canvas for your dream home with this remarkable 6,281 sq ft buildable bayfront lot in Atlantic City! Nestled in a prime location, this expansive parcel offers breathtaking views of the bay, ensuring stunning sunrises and sunsets that will be yours to enjoy every day. Imagine crafting a custom coastal retreat...

PROPERTY FEATURES

CONTACT



Ask for Theresa Maina
Berger Realty Inc
3160 Asbury Avenue, Ocean City
Call: 609-703-7725
Email to: tam@bergerrealty.com

Scan to see Property page.



Berger Realty, Inc.
3160 Asbury Avenue
Ocean City, NJ 08226
1-877-237-4371 / 609-399-0076
info@bergerrealty.com

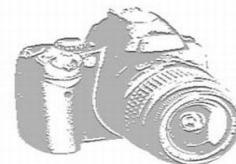


2110 Riverside Dr, Atlantic City, NJ, 08401

Price \$140,000.00

PHOTO NOT AVAILABLE

PROPERTY DETAILS



Total Rooms	
Bedrooms	0
Baths Full	0
Baths Half	0
Year Built	
Type	
Block Number	714
Listing #	596223
Taxes	3200.00

COMMENTS

Unparalleled Bayfront Lot in Atlantic City Discover the perfect canvas for your dream home with this remarkable 6,281 sq ft buildable bayfront lot in Atlantic City! Nestled in a prime location, this expansive parcel offers breathtaking views of the bay, ensuring stunning sunrises and sunsets that will be yours to enjoy every day. Imagine crafting a custom coastal retreat...

PROPERTY FEATURES

CONTACT



Ask for Theresa Maina
Berger Realty Inc
3160 Asbury Avenue, Ocean City
Call: 609-703-7725
Email to: tam@bergerrealty.com

Scan to see Property page.

