



Berger Realty, Inc.  
3160 Asbury Avenue  
Ocean City, NJ 08226  
1-877-237-4371 / 609-399-0076  
info@bergerrealty.com

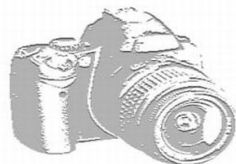


2110 Riverside Dr, Atlantic City, NJ, 08401

Price \$140,000.00

PHOTO NOT AVAILABLE

#### PROPERTY DETAILS



Total Rooms	
Bedrooms	0
Baths Full	0
Baths Half	0
Year Built	
Type	
Block Number	714
Listing #	596223
Taxes	3200.00

#### COMMENTS

*Unparalleled Bayfront Lot in Atlantic City Discover the perfect canvas for your dream home with this remarkable 6,281 sq ft buildable bayfront lot in Atlantic City! Nestled in a prime location, this expansive parcel offers breathtaking views of the bay, ensuring stunning sunrises and sunsets that will be yours to enjoy every day. Imagine crafting a custom coastal retreat...*

#### PROPERTY FEATURES

#### CONTACT



Ask for Graham Ginn  
Berger Realty Inc  
3160 Asbury Avenue, Ocean City  
Call: 609-602-4884  
Email to: gmg@bergerrealty.com  
https://www.ocnj.com

Scan to see Property page.



Berger Realty, Inc.  
3160 Asbury Avenue  
Ocean City, NJ 08226  
1-877-237-4371 / 609-399-0076  
info@bergerrealty.com

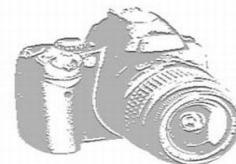


2110 Riverside Dr, Atlantic City, NJ, 08401

Price \$140,000.00

PHOTO NOT AVAILABLE

#### PROPERTY DETAILS



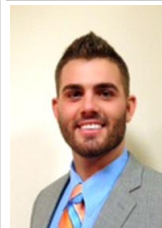
Total Rooms	
Bedrooms	0
Baths Full	0
Baths Half	0
Year Built	
Type	
Block Number	714
Listing #	596223
Taxes	3200.00

#### COMMENTS

*Unparalleled Bayfront Lot in Atlantic City Discover the perfect canvas for your dream home with this remarkable 6,281 sq ft buildable bayfront lot in Atlantic City! Nestled in a prime location, this expansive parcel offers breathtaking views of the bay, ensuring stunning sunrises and sunsets that will be yours to enjoy every day. Imagine crafting a custom coastal retreat...*

#### PROPERTY FEATURES

#### CONTACT



Ask for Graham Ginn  
Berger Realty Inc  
3160 Asbury Avenue, Ocean City  
Call: 609-602-4884  
Email to: gmg@bergerrealty.com  
https://www.ocnj.com

Scan to see Property page.

