

Berger Realty

Since 1926



Berger Realty, Inc.
3160 Asbury Avenue
Ocean City, NJ 08226
1-877-237-4371 / 609-399-0076
info@bergerrealty.com



1653 Somers Point Rd, Egg Harbor Township, NJ, 08234

Price \$249,000.00

PROPERTY DETAILS

Total Rooms	
Bedrooms	0
Baths Full	0
Baths Half	0
Year Built	
Type	
Block Number	8802
Listing #	596052
Taxes	5484.00

COMMENTS

One acre Lot adjacent to country owned preserved land. Tranquil and set back off the road, this property is a nature lover and history lovers dream. Farm house, with cold storage cellar and large two bay Garage/workshop with a second floor loft. Everything is being sold in as is condition. Seller will entertain cash offers only....

PROPERTY FEATURES

CONTACT



Ask for Margarita Kobilianets
Berger Realty Inc
3160 Asbury Avenue, Ocean City
Call: 609-674-3417
Email to: mak@bergerrealty.com

Scan to see Property page.



Berger Realty

Since 1926



Berger Realty, Inc.
3160 Asbury Avenue
Ocean City, NJ 08226
1-877-237-4371 / 609-399-0076
info@bergerrealty.com



1653 Somers Point Rd, Egg Harbor Township, NJ, 08234

Price \$249,000.00

PROPERTY DETAILS

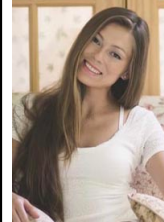
Total Rooms	
Bedrooms	0
Baths Full	0
Baths Half	0
Year Built	
Type	
Block Number	8802
Listing #	596052
Taxes	5484.00

COMMENTS

One acre Lot adjacent to country owned preserved land. Tranquil and set back off the road, this property is a nature lover and history lovers dream. Farm house, with cold storage cellar and large two bay Garage/workshop with a second floor loft. Everything is being sold in as is condition. Seller will entertain cash offers only....

PROPERTY FEATURES

CONTACT



Ask for Margarita Kobilianets
Berger Realty Inc
3160 Asbury Avenue, Ocean City
Call: 609-674-3417
Email to: mak@bergerrealty.com

Scan to see Property page.

