



Berger Realty, Inc
1330 Bay Avenue
Ocean City, NJ 08226
609-391-1330/609-391-1300
info@bergerrealty.com



1653 Somers Point Rd, Egg Harbor Township, NJ, 08234

Price \$249,000.00



PROPERTY DETAILS

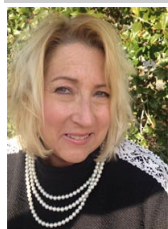
Total Rooms	
Bedrooms	0
Baths Full	0
Baths Half	0
Year Built	
Type	
Block Number	8802
Listing #	596052
Taxes	5484.00

COMMENTS

One acre Lot adjacent to country owned preserved land. Tranquil and set back off the road, this property is a nature lover and history lovers dream. Farm house, with cold storage cellar and large two bay Garage/workshop with a second floor loft. Everything is being sold in as is condition. Seller will entertain cash offers only....

PROPERTY FEATURES

CONTACT



Ask for Joanne Kelly
Berger Realty Inc
1330 Bay Avenue, Ocean City
Call: 609-425-2106
Email to: jmk@bergerrealty.com

Scan to see Property page.



Berger Realty, Inc
1330 Bay Avenue
Ocean City, NJ 08226
609-391-1330/609-391-1300
info@bergerrealty.com



1653 Somers Point Rd, Egg Harbor Township, NJ, 08234

Price \$249,000.00



PROPERTY DETAILS

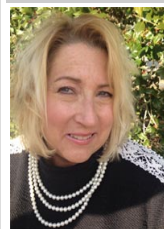
Total Rooms	
Bedrooms	0
Baths Full	0
Baths Half	0
Year Built	
Type	
Block Number	8802
Listing #	596052
Taxes	5484.00

COMMENTS

One acre Lot adjacent to country owned preserved land. Tranquil and set back off the road, this property is a nature lover and history lovers dream. Farm house, with cold storage cellar and large two bay Garage/workshop with a second floor loft. Everything is being sold in as is condition. Seller will entertain cash offers only....

PROPERTY FEATURES

CONTACT



Ask for Joanne Kelly
Berger Realty Inc
1330 Bay Avenue, Ocean City
Call: 609-425-2106
Email to: jmk@bergerrealty.com

Scan to see Property page.

