



Berger Realty, Inc.
3160 Asbury Avenue
Ocean City, NJ 08226
1-877-237-4371 / 609-399-0076
info@bergerrealty.com



1836 Wesley, Ocean City, NJ, 08226

Price \$2,995,000.00

PROPERTY DETAILS

Total Rooms	
Bedrooms	0
Baths Full	0
Baths Half	0
Year Built	
Type	
Block Number	1802
Listing #	596020
Taxes	10868.00

COMMENTS

Now offered as a prime Goldcoast development opportunity, 1836 Wesley Avenue sits on an oversized 40' x 120' lot directly across from Ocean City's iconic beaches and boardwalk. This rare parcel offers sweeping ocean views and is ideally positioned for those looking to build new luxury construction in one of the island's most coveted locations. Zoned R-2, the proper...

PROPERTY FEATURES

CONTACT



Ask for Margarita Kobilianets
Berger Realty Inc
3160 Asbury Avenue, Ocean City
Call: 609-674-3417
Email to: mak@bergerrealty.com

Scan to see Property page.



Berger Realty, Inc.
3160 Asbury Avenue
Ocean City, NJ 08226
1-877-237-4371 / 609-399-0076
info@bergerrealty.com



1836 Wesley, Ocean City, NJ, 08226

Price \$2,995,000.00

PROPERTY DETAILS

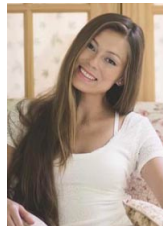
Total Rooms	
Bedrooms	0
Baths Full	0
Baths Half	0
Year Built	
Type	
Block Number	1802
Listing #	596020
Taxes	10868.00

COMMENTS

Now offered as a prime Goldcoast development opportunity, 1836 Wesley Avenue sits on an oversized 40' x 120' lot directly across from Ocean City's iconic beaches and boardwalk. This rare parcel offers sweeping ocean views and is ideally positioned for those looking to build new luxury construction in one of the island's most coveted locations. Zoned R-2, the proper...

PROPERTY FEATURES

CONTACT



Ask for Margarita Kobilianets
Berger Realty Inc
3160 Asbury Avenue, Ocean City
Call: 609-674-3417
Email to: mak@bergerrealty.com

Scan to see Property page.

