

Berger Realty

Since 1926



Berger Realty, Inc.
3160 Asbury Avenue
Ocean City, NJ 08226
1-877-237-4371 / 609-399-0076
info@bergerrealty.com



22 Green, Pilesgrove Township, NJ, 08098

Price \$399,900.00

PROPERTY DETAILS

Total Rooms	
Bedrooms	0
Baths Full	0
Baths Half	0
Year Built	1997
Type	
Block Number	50
Listing #	595984
Taxes	7681.00

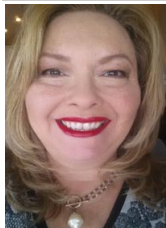
COMMENTS

Welcome to 22 Green Street Pilesgrove, NJ. This 4,800 sq. ft. commercial/retail space duplex is situated perfectly at the intersection of SH#40 and Green street, which offers high visibility to highway traffic. This property has been the home of an ice cream parlor, antique store, and pet grooming business. There is approximately 8+ off street parking spaces in front ...

PROPERTY FEATURES

OutsideFeatures	ParkingGarage	Basement	Heating
Porch	None	6 Ft. or More Head Room	Electric Forced Air Gas-Natural
Cooling	HotWater	Water	Sewer
Central Gas	Gas Tankless-gas	Well	Septic

CONTACT



Ask for Theresa Maina
Berger Realty Inc
3160 Asbury Avenue, Ocean City
Call: 609-703-7725
Email to: tam@bergerrealty.com

Scan to see Property page.



Berger Realty

Since 1926



Berger Realty, Inc.
3160 Asbury Avenue
Ocean City, NJ 08226
1-877-237-4371 / 609-399-0076
info@bergerrealty.com



22 Green, Pilesgrove Township, NJ, 08098

Price \$399,900.00

PROPERTY DETAILS

Total Rooms	
Bedrooms	0
Baths Full	0
Baths Half	0
Year Built	1997
Type	
Block Number	50
Listing #	595984
Taxes	7681.00

COMMENTS

Welcome to 22 Green Street Pilesgrove, NJ. This 4,800 sq. ft. commercial/retail space duplex is situated perfectly at the intersection of SH#40 and Green street, which offers high visibility to highway traffic. This property has been the home of an ice cream parlor, antique store, and pet grooming business. There is approximately 8+ off street parking spaces in front ...

PROPERTY FEATURES

OutsideFeatures	ParkingGarage	Basement	Heating
Porch	None	6 Ft. or More Head Room	Electric Forced Air Gas-Natural
Cooling	HotWater	Water	Sewer
Central Gas	Gas Tankless-gas	Well	Septic

CONTACT



Ask for Theresa Maina
Berger Realty Inc
3160 Asbury Avenue, Ocean City
Call: 609-703-7725
Email to: tam@bergerrealty.com

Scan to see Property page.

