



Berger Realty, Inc.
3160 Asbury Avenue
Ocean City, NJ 08226
1-877-237-4371 / 609-399-0076
info@bergerrealty.com



1101 Tilton, Northfield, NJ, 08225

Price \$2,075,000.00

PROPERTY DETAILS

Total Rooms	
Bedrooms	0
Baths Full	0
Baths Half	0
Year Built	
Type	
Block Number	42
Listing #	595907
Taxes	48898.00

COMMENTS

Prime commercial location on Tilton Road with high visibility. The previous use was a bank. There is a NNN Lease in place by previous tenant. This property is zoned C-B and all uses will have to be verified by the buyer with the township Property has 17 parking spaces. <https://buildout.com/website/1101TiltonRd...>

PROPERTY FEATURES

CONTACT



Ask for Margarita Kobilianets
Berger Realty Inc
3160 Asbury Avenue, Ocean City
Call: 609-674-3417
Email to: mak@bergerrealty.com

Scan to see Property page.



Berger Realty, Inc.
3160 Asbury Avenue
Ocean City, NJ 08226
1-877-237-4371 / 609-399-0076
info@bergerrealty.com



1101 Tilton, Northfield, NJ, 08225

Price \$2,075,000.00

PROPERTY DETAILS

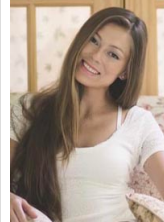
Total Rooms	
Bedrooms	0
Baths Full	0
Baths Half	0
Year Built	
Type	
Block Number	42
Listing #	595907
Taxes	48898.00

COMMENTS

Prime commercial location on Tilton Road with high visibility. The previous use was a bank. There is a NNN Lease in place by previous tenant. This property is zoned C-B and all uses will have to be verified by the buyer with the township Property has 17 parking spaces. <https://buildout.com/website/1101TiltonRd...>

PROPERTY FEATURES

CONTACT



Ask for Margarita Kobilianets
Berger Realty Inc
3160 Asbury Avenue, Ocean City
Call: 609-674-3417
Email to: mak@bergerrealty.com

Scan to see Property page.

