



Berger Realty, Inc.
3160 Asbury Avenue
Ocean City, NJ 08226
1-877-237-4371 / 609-399-0076
info@bergerrealty.com



1101 Tilton, Northfield, NJ, 08225

Price \$2,075,000.00



PROPERTY DETAILS

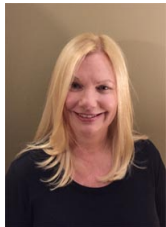
| | |
|--------------|----------|
| Total Rooms | |
| Bedrooms | 0 |
| Baths Full | 0 |
| Baths Half | 0 |
| Year Built | |
| Type | |
| Block Number | 42 |
| Listing # | 595907 |
| Taxes | 48898.00 |

COMMENTS

Prime commercial location on Tilton Road with high visibility. The previous use was a bank. There is a NNN Lease in place by previous tenant. This property is zoned C-B and all uses will have to be verified by the buyer with the township Property has 17 parking spaces. <https://buildout.com/website/1101TiltonRd...>

PROPERTY FEATURES

CONTACT



Ask for Dawn Warren
Berger Realty Inc
3160 Asbury Avenue, Ocean City
Call: 609-432-4966
Email to: dew@bergerrealty.com

Scan to see Property page.



Berger Realty, Inc.
3160 Asbury Avenue
Ocean City, NJ 08226
1-877-237-4371 / 609-399-0076
info@bergerrealty.com



1101 Tilton, Northfield, NJ, 08225

Price \$2,075,000.00



PROPERTY DETAILS

| | |
|--------------|----------|
| Total Rooms | |
| Bedrooms | 0 |
| Baths Full | 0 |
| Baths Half | 0 |
| Year Built | |
| Type | |
| Block Number | 42 |
| Listing # | 595907 |
| Taxes | 48898.00 |

COMMENTS

Prime commercial location on Tilton Road with high visibility. The previous use was a bank. There is a NNN Lease in place by previous tenant. This property is zoned C-B and all uses will have to be verified by the buyer with the township Property has 17 parking spaces. <https://buildout.com/website/1101TiltonRd...>

PROPERTY FEATURES

CONTACT



Ask for Dawn Warren
Berger Realty Inc
3160 Asbury Avenue, Ocean City
Call: 609-432-4966
Email to: dew@bergerrealty.com

Scan to see Property page.

