

Berger Realty

Since 1926



Berger Realty, Inc.
3160 Asbury Avenue
Ocean City, NJ 08226
1-877-237-4371 / 609-399-0076
info@bergerrealty.com



419 Bethel, Somers Point, NJ, 08244

Price \$449,900.00

PROPERTY DETAILS

Total Rooms	0
Bedrooms	0
Baths Full	0
Baths Half	0
Year Built	1875
Type	
Block Number	814
Listing #	595868
Taxes	20455.00

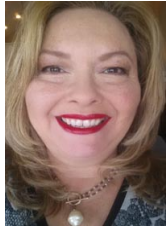
COMMENTS

Prime Commercial Opportunity in High-Traffic Location! Positioned in one of the area's most sought-after corridors, this exceptional commercial property offers outstanding visibility and convenience — just minutes from major highways, top shopping centers, and established medical facilities. Whether you're looking to open your own professional practice, launch a new o...

PROPERTY FEATURES

Exterior	ParkingGarage	Heating	Cooling
Frame/Wood	11 or More Spaces	Gas-Natural	Central
Vinyl			

CONTACT



Ask for Theresa Maina
Berger Realty Inc
3160 Asbury Avenue, Ocean City
Call: 609-703-7725
Email to: tam@bergerrealty.com

Scan to see Property page.



Berger Realty

Since 1926



Berger Realty, Inc.
3160 Asbury Avenue
Ocean City, NJ 08226
1-877-237-4371 / 609-399-0076
info@bergerrealty.com



419 Bethel, Somers Point, NJ, 08244

Price \$449,900.00

PROPERTY DETAILS

Total Rooms	0
Bedrooms	0
Baths Full	0
Baths Half	0
Year Built	1875
Type	
Block Number	814
Listing #	595868
Taxes	20455.00

COMMENTS

Prime Commercial Opportunity in High-Traffic Location! Positioned in one of the area's most sought-after corridors, this exceptional commercial property offers outstanding visibility and convenience — just minutes from major highways, top shopping centers, and established medical facilities. Whether you're looking to open your own professional practice, launch a new o...

PROPERTY FEATURES

Exterior	ParkingGarage	Heating	Cooling
Frame/Wood	11 or More Spaces	Gas-Natural	Central
Vinyl			

CONTACT



Ask for Theresa Maina
Berger Realty Inc
3160 Asbury Avenue, Ocean City
Call: 609-703-7725
Email to: tam@bergerrealty.com

Scan to see Property page.

