



Berger Realty, Inc.
3160 Asbury Avenue
Ocean City, NJ 08226
1-877-237-4371 / 609-399-0076
info@bergerrealty.com



Route 9, Cape May Court House, NJ, 08210

Price \$18,000.00



PROPERTY DETAILS

Total Rooms	
Bedrooms	0
Baths Full	0
Baths Half	0
Year Built	
Type	
Block Number	1031
Listing #	595835
Taxes	419.00

COMMENTS

**Located Next to 1804 US 9, Cape May Court House for GPS* Commercial Lot Zoned Town Business available for many permitted uses: From Retail sales, Restaurants, Professional offices, Banks and similar financial institutions, Business offices, Health care facilities and services, Bed-and-breakfasts, Studios, Recreational, cultural and entertainment facilities. Automobile, ca...*

PROPERTY FEATURES

CONTACT

Berger Realty Inc
3160 Asbury Ave.
Ocean City, NJ 08226
Call: (609) 399-0076
Email to: info@bergerrealty.com
Web: www.bergerrealty.com

Scan to see Property page.

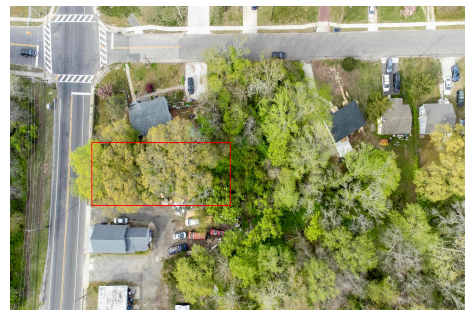


Berger Realty, Inc.
3160 Asbury Avenue
Ocean City, NJ 08226
1-877-237-4371 / 609-399-0076
info@bergerrealty.com



Route 9, Cape May Court House, NJ, 08210

Price \$18,000.00



PROPERTY DETAILS

Total Rooms	
Bedrooms	0
Baths Full	0
Baths Half	0
Year Built	
Type	
Block Number	1031
Listing #	595835
Taxes	419.00

COMMENTS

**Located Next to 1804 US 9, Cape May Court House for GPS* Commercial Lot Zoned Town Business available for many permitted uses: From Retail sales, Restaurants, Professional offices, Banks and similar financial institutions, Business offices, Health care facilities and services, Bed-and-breakfasts, Studios, Recreational, cultural and entertainment facilities. Automobile, ca...*

PROPERTY FEATURES

CONTACT

Berger Realty Inc
3160 Asbury Ave.
Ocean City, NJ 08226
Call: (609) 399-0076
Email to: info@bergerrealty.com
Web: www.bergerrealty.com

Scan to see Property page.

