

# Berger Realty

Since 1926

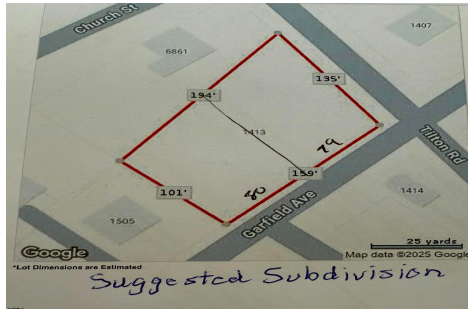


Berger Realty, Inc  
1330 Bay Avenue  
Ocean City, NJ 08226  
609-391-1330/609-391-1300  
info@bergerrealty.com



1413-1419 Garfield, Pleasantville, NJ, 08232

Price \$69,900.00



## PROPERTY DETAILS

|              |         |
|--------------|---------|
| Total Rooms  |         |
| Bedrooms     | 0       |
| Baths Full   | 0       |
| Baths Half   | 0       |
| Year Built   |         |
| Type         |         |
| Block Number | 199     |
| Listing #    | 595709  |
| Taxes        | 1893.00 |

## COMMENTS

Large buildable lot on the corner of Garfield Ave and Tilton Roads on the Pleasantville/EHT/Northfield borders. Seller believes it may be subdividable but buyer responsible to do their own due diligence before purchasing....

## PROPERTY FEATURES

## CONTACT



Ask for Sheilah Baran  
Berger Realty Inc  
1330 Bay Avenue, Ocean City  
Call: 847-840-2205  
Email to: [sdb@bergerrealty.com](mailto:sdb@bergerrealty.com)

Scan to see Property page.



# Berger Realty

Since 1926

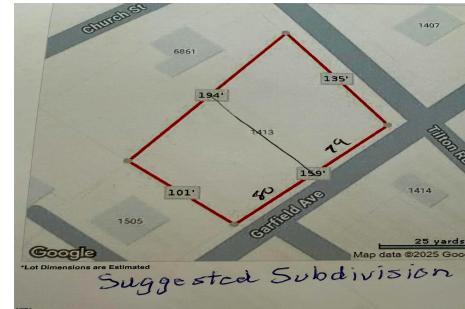


Berger Realty, Inc  
1330 Bay Avenue  
Ocean City, NJ 08226  
609-391-1330/609-391-1300  
info@bergerrealty.com



1413-1419 Garfield, Pleasantville, NJ, 08232

Price \$69,900.00



## PROPERTY DETAILS

|              |         |
|--------------|---------|
| Total Rooms  |         |
| Bedrooms     | 0       |
| Baths Full   | 0       |
| Baths Half   | 0       |
| Year Built   |         |
| Type         |         |
| Block Number | 199     |
| Listing #    | 595709  |
| Taxes        | 1893.00 |

## COMMENTS

Large buildable lot on the corner of Garfield Ave and Tilton Roads on the Pleasantville/EHT/Northfield borders. Seller believes it may be subdividable but buyer responsible to do their own due diligence before purchasing....

## PROPERTY FEATURES

## CONTACT



Ask for Sheilah Baran  
Berger Realty Inc  
1330 Bay Avenue, Ocean City  
Call: 847-840-2205  
Email to: [sdb@bergerrealty.com](mailto:sdb@bergerrealty.com)

Scan to see Property page.

