

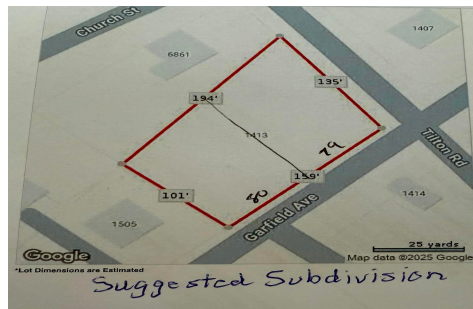


Berger Realty, Inc.
3160 Asbury Avenue
Ocean City, NJ 08226
1-877-237-4371 / 609-399-0076
info@bergerrealty.com



1413-1419 Garfield, Pleasantville, NJ, 08232

Price \$69,900.00



PROPERTY DETAILS

Total Rooms	
Bedrooms	0
Baths Full	0
Baths Half	0
Year Built	
Type	
Block Number	199
Listing #	595709
Taxes	1893.00

COMMENTS

Large buildable lot on the corner of Garfield Ave and Tilton Roads on the Pleasantville/EHT/Northfield borders. Seller believes it may be subdividable but buyer responsible to do their own due diligence before purchasing....

PROPERTY FEATURES

CONTACT



Ask for Leon Grisbaum
Berger Realty Inc
3160 Asbury Avenue, Ocean City
Call:
Email to:

Scan to see Property page.

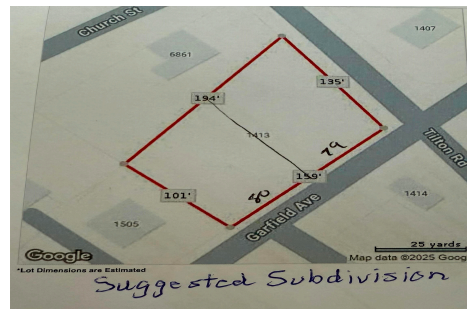


Berger Realty, Inc.
3160 Asbury Avenue
Ocean City, NJ 08226
1-877-237-4371 / 609-399-0076
info@bergerrealty.com



1413-1419 Garfield, Pleasantville, NJ, 08232

Price \$69,900.00



PROPERTY DETAILS

Total Rooms	
Bedrooms	0
Baths Full	0
Baths Half	0
Year Built	
Type	
Block Number	199
Listing #	595709
Taxes	1893.00

COMMENTS

Large buildable lot on the corner of Garfield Ave and Tilton Roads on the Pleasantville/EHT/Northfield borders. Seller believes it may be subdividable but buyer responsible to do their own due diligence before purchasing....

PROPERTY FEATURES

CONTACT



Ask for Leon Grisbaum
Berger Realty Inc
3160 Asbury Avenue, Ocean City
Call:
Email to:

Scan to see Property page.

