

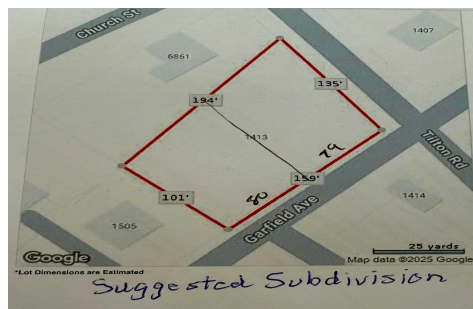


Berger Realty, Inc.
3160 Ashbury Avenue
Ocean City, NJ 08226
1-877-237-4371 / 609-399-0076
 [**info@bergerrealty.com**](mailto:info@bergerrealty.com)



1413-1419 Garfield, Pleasantville, NJ, 08232

Price \$69,900.00



PROPERTY DETAILS

| | |
|--------------|---------|
| Total Rooms | |
| Bedrooms | 0 |
| Baths Full | 0 |
| Baths Half | 0 |
| Year Built | |
| Type | |
| Block Number | 199 |
| Listing # | 595709 |
| Taxes | 1893.00 |

COMMENTS

Large buildable lot on the corner of Garfield Ave and Tilton Roads on the Pleasantville/EHT/Northfield borders. Seller believes it may be subdividable but buyer responsible to do their own due diligence before purchasing....

PROPERTY FEATURES

CONTACT



Ask for Francis Cuomo
Berger Realty Inc
3160 Asbury Avenue, Ocean City
Call: 609-305-3503
Email to: fmc@bergerrealty.com

Scan to see Property page.

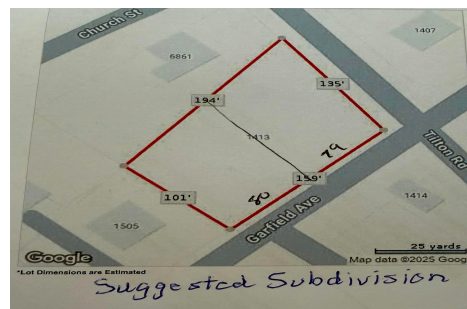


Berger Realty, Inc.
3160 Asbury Avenue
Ocean City, NJ 08226
1-877-237-4371 / 609-399-0076
 [**info@bergerrealty.com**](mailto:info@bergerrealty.com)



1413-1419 Garfield, Pleasantville, NJ, 08232

Price \$69,900.00



PROPERTY DETAILS

| | |
|--------------|---------|
| Total Rooms | |
| Bedrooms | 0 |
| Baths Full | 0 |
| Baths Half | 0 |
| Year Built | |
| Type | |
| Block Number | 199 |
| Listing # | 595709 |
| Taxes | 1893.00 |

COMMENTS

Large buildable lot on the corner of Garfield Ave and Tilton Roads on the Pleasantville/EHT/Northfield borders. Seller believes it may be subdividable but buyer responsible to do their own due diligence before purchasing....

PROPERTY FEATURES

CONTACT



Ask for Francis Cuomo
Berger Realty Inc
3160 Asbury Avenue, Ocean City
Call: 609-305-3503
Email to: fmc@bergerrealty.com

Scan to see Property page.

