

# Berger Realty

Since 1926



Berger Realty, Inc  
1330 Bay Avenue  
Ocean City, NJ 08226  
609-391-1330/609-391-1300  
info@bergerrealty.com



1413-1419 Garfield, Pleasantville, NJ, 08232

Price \$69,900.00



## PROPERTY DETAILS

Total Rooms	
Bedrooms	0
Baths Full	0
Baths Half	0
Year Built	
Type	
Block Number	199
Listing #	595709
Taxes	1893.00

## COMMENTS

Large buildable lot on the corner of Garfield Ave and Tilton Roads on the Pleasantville/EHT/Northfield borders. Seller believes it may be subdividable but buyer responsible to do their own due diligence before purchasing....

## PROPERTY FEATURES

## CONTACT

Ask for Donna M. Drohan  
Berger Realty Inc  
1330 Bay Avenue, Ocean City  
Call:  
Email to: dmd@bergerrealty.com

Scan to see Property page.



# Berger Realty

Since 1926

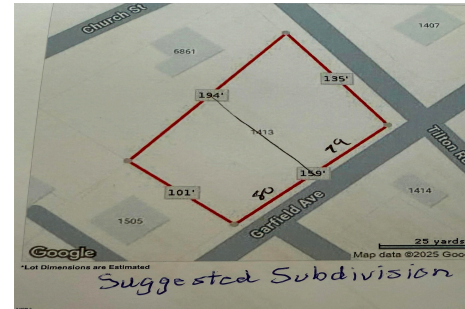


Berger Realty, Inc  
1330 Bay Avenue  
Ocean City, NJ 08226  
609-391-1330/609-391-1300  
info@bergerrealty.com



1413-1419 Garfield, Pleasantville, NJ, 08232

Price \$69,900.00



## PROPERTY DETAILS

Total Rooms	
Bedrooms	0
Baths Full	0
Baths Half	0
Year Built	
Type	
Block Number	199
Listing #	595709
Taxes	1893.00

## COMMENTS

Large buildable lot on the corner of Garfield Ave and Tilton Roads on the Pleasantville/EHT/Northfield borders. Seller believes it may be subdividable but buyer responsible to do their own due diligence before purchasing....

## PROPERTY FEATURES

## CONTACT

Ask for Donna M. Drohan  
Berger Realty Inc  
1330 Bay Avenue, Ocean City  
Call:  
Email to: dmd@bergerrealty.com

Scan to see Property page.

