

Berger Realty

Since 1926



Berger Realty, Inc.
3160 Asbury Avenue
Ocean City, NJ 08226
1-877-237-4371 / 609-399-0076
info@bergerrealty.com

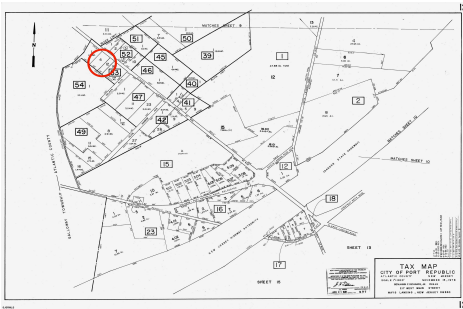


00 Clarks Landing, Port Republic, NJ, 08241

Price \$99,000.00

PROPERTY DETAILS

Total Rooms	0
Bedrooms	0
Baths Full	0
Baths Half	0
Year Built	
Type	
Block Number	53
Listing #	595680
Taxes	2000.00



COMMENTS

Port Republic - Great location and a rare find! 2 contiguous lots on Clarks Landing Road. Lots equal 1.43 acres. Lot #4 - 160 ft. frontage. Lot #12 - 80 ft. frontage. Depth is 260ft. Wooded, All approvals including Pinelands, Zoning solely the responsibility of the buyer. Great opportunity for builder/investor or homeowner....

PROPERTY FEATURES

CONTACT



Ask for Yvonne Kuhn
Berger Realty Inc
3160 Asbury Avenue, Ocean City
Call: 717-269-7813
Email to: ymk@bergerrealty.com

Scan to see Property page.



Berger Realty

Since 1926



Berger Realty, Inc.
3160 Asbury Avenue
Ocean City, NJ 08226
1-877-237-4371 / 609-399-0076
info@bergerrealty.com

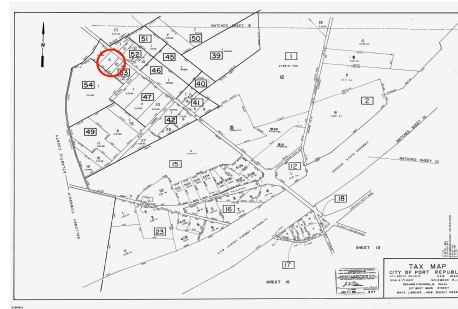


00 Clarks Landing, Port Republic, NJ, 08241

Price \$99,000.00

PROPERTY DETAILS

Total Rooms	0
Bedrooms	0
Baths Full	0
Baths Half	0
Year Built	
Type	
Block Number	53
Listing #	595680
Taxes	2000.00



COMMENTS

Port Republic - Great location and a rare find! 2 contiguous lots on Clarks Landing Road. Lots equal 1.43 acres. Lot #4 - 160 ft. frontage. Lot #12 - 80 ft. frontage. Depth is 260ft. Wooded, All approvals including Pinelands, Zoning solely the responsibility of the buyer. Great opportunity for builder/investor or homeowner....

PROPERTY FEATURES

CONTACT



Ask for Yvonne Kuhn
Berger Realty Inc
3160 Asbury Avenue, Ocean City
Call: 717-269-7813
Email to: ymk@bergerrealty.com

Scan to see Property page.

