

# Berger Realty

Since 1926



Berger Realty, Inc  
1330 Bay Avenue  
Ocean City, NJ 08226  
609-391-1330/609-391-1300  
info@bergerrealty.com

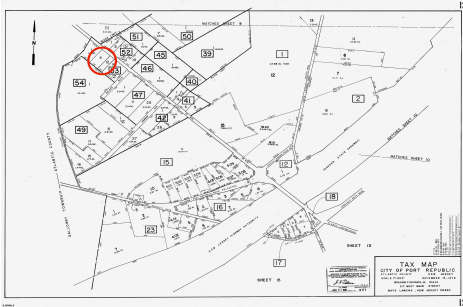


00 Clarks Landing, Port Republic, NJ, 08241

Price \$99,000.00

## PROPERTY DETAILS

Total Rooms	
Bedrooms	0
Baths Full	0
Baths Half	0
Year Built	
Type	
Block Number	53
Listing #	595680
Taxes	2000.00



## COMMENTS

Port Republic - Great location and a rare find! 2 contiguous lots on Clarks Landing Road. Lots equal 1.43 acres. Lot #4 - 160 ft. frontage. Lot #12 - 80 ft. frontage. Depth is 260ft. Wooded, All approvals including Pinelands, Zoning solely the responsibility of the buyer. Great opportunity for builder/investor or homeowner....

## PROPERTY FEATURES

## CONTACT



Ask for Cassidy Fletcher  
Berger Realty Inc  
1330 Bay Avenue, Ocean City  
Call: 609-425-6121  
Email to: crf@bergerrealty.com

Scan to see Property page.



# Berger Realty

Since 1926



Berger Realty, Inc  
1330 Bay Avenue  
Ocean City, NJ 08226  
609-391-1330/609-391-1300  
info@bergerrealty.com

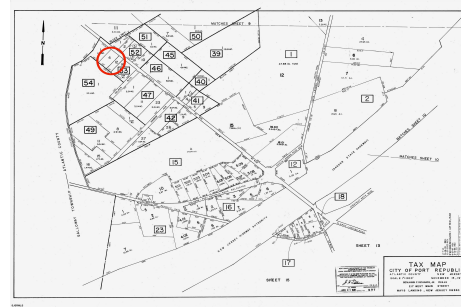


00 Clarks Landing, Port Republic, NJ, 08241

Price \$99,000.00

## PROPERTY DETAILS

Total Rooms	
Bedrooms	0
Baths Full	0
Baths Half	0
Year Built	
Type	
Block Number	53
Listing #	595680
Taxes	2000.00



## COMMENTS

Port Republic - Great location and a rare find! 2 contiguous lots on Clarks Landing Road. Lots equal 1.43 acres. Lot #4 - 160 ft. frontage. Lot #12 - 80 ft. frontage. Depth is 260ft. Wooded, All approvals including Pinelands, Zoning solely the responsibility of the buyer. Great opportunity for builder/investor or homeowner....

## PROPERTY FEATURES

## CONTACT



Ask for Cassidy Fletcher  
Berger Realty Inc  
1330 Bay Avenue, Ocean City  
Call: 609-425-6121  
Email to: crf@bergerrealty.com

Scan to see Property page.

