

# Berger Realty

Since 1926



Berger Realty, Inc  
1330 Bay Avenue  
Ocean City, NJ 08226  
609-391-1330/609-391-1300  
info@bergerrealty.com



5467 Harding Hwy, Mays Landing, NJ, 08330

Price \$400,000.00



## PROPERTY DETAILS

Total Rooms	
Bedrooms	0
Baths Full	0
Baths Half	0
Year Built	1926
Type	
Block Number	996
Listing #	595657
Taxes	6525.00

## COMMENTS

Welcome to Mays Landing, NJ! Charming Dutch Colonial on Prime Highway Location – Endless Possibilities! Come tour this classic brick Dutch Colonial, perfectly positioned on over one acre of land along high-visibility US Highway Route 40 at the gateway to Mays Landing, NJ. Steeped in character and history, this stately property served as a successful real estate office fo...

## PROPERTY FEATURES

Exterior Brick	OutsideFeatures Security Light/System Sign	ParkingGarage 6 to 10 Spaces Off Street Other (See Remarks) Paved	InteriorFeatures 220 Volt Electricity Restroom Security System Smoke/Fire Alarm
Basement Full Unfinished	Heating Gas-Natural Multi-Zoned	Cooling Central Multi-Zoned	HotWater Gas
Water Public	Sewer Public Sewer		

## CONTACT



Ask for Joanne Kelly  
Berger Realty Inc  
1330 Bay Avenue, Ocean City  
Call: 609-425-2106  
Email to: jmk@bergerrealty.com

Scan to see Property page.



# Berger Realty

Since 1926



Berger Realty, Inc  
1330 Bay Avenue  
Ocean City, NJ 08226  
609-391-1330/609-391-1300  
info@bergerrealty.com



5467 Harding Hwy, Mays Landing, NJ, 08330

Price \$400,000.00



## PROPERTY DETAILS

Total Rooms	
Bedrooms	0
Baths Full	0
Baths Half	0
Year Built	1926
Type	
Block Number	996
Listing #	595657
Taxes	6525.00

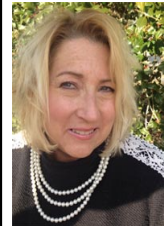
## COMMENTS

Welcome to Mays Landing, NJ! Charming Dutch Colonial on Prime Highway Location – Endless Possibilities! Come tour this classic brick Dutch Colonial, perfectly positioned on over one acre of land along high-visibility US Highway Route 40 at the gateway to Mays Landing, NJ. Steeped in character and history, this stately property served as a successful real estate office fo...

## PROPERTY FEATURES

Exterior Brick	OutsideFeatures Security Light/System Sign	ParkingGarage 6 to 10 Spaces Off Street Other (See Remarks) Paved	InteriorFeatures 220 Volt Electricity Restroom Security System Smoke/Fire Alarm
Basement Full Unfinished	Heating Gas-Natural Multi-Zoned	Cooling Central Multi-Zoned	HotWater Gas
Water Public	Sewer Public Sewer		

## CONTACT



Ask for Joanne Kelly  
Berger Realty Inc  
1330 Bay Avenue, Ocean City  
Call: 609-425-2106  
Email to: jmk@bergerrealty.com

Scan to see Property page.

