



Berger Realty, Inc.  
3160 Asbury Avenue  
Ocean City, NJ 08226  
1-877-237-4371 / 609-399-0076  
info@bergerrealty.com



222 New, Pleasantville, NJ, 08232

Price \$695,000.00



#### PROPERTY DETAILS

Total Rooms	
Bedrooms	0
Baths Full	0
Baths Half	0
Year Built	1998
Type	
Block Number	374
Listing #	595603
Taxes	16237.00

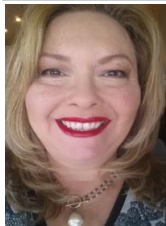
#### COMMENTS

*Spacious partial Two-Story Warehouse in Pleasantville – Approx. 5,000 Sq Ft Built in 1998, this well-maintained warehouse offers approximately 5,000 square feet of versatile space in a prime Pleasantville location. The first floor includes an office area that can easily be converted into a showroom, while the second floor features additional space ideal for two more offi...*

#### PROPERTY FEATURES

Exterior Brick	ParkingGarage 6 to 10 Spaces	InteriorFeatures 220 Volt Electricity Restroom Storage	Basement Slab
Water Public	Sewer Public Sewer		

#### CONTACT



Ask for Theresa Maina  
Berger Realty Inc  
3160 Asbury Avenue, Ocean City  
Call: 609-703-7725  
Email to: tam@bergerrealty.com

Scan to see Property page.



Berger Realty, Inc.  
3160 Asbury Avenue  
Ocean City, NJ 08226  
1-877-237-4371 / 609-399-0076  
info@bergerrealty.com



222 New, Pleasantville, NJ, 08232

Price \$695,000.00



#### PROPERTY DETAILS

Total Rooms	
Bedrooms	0
Baths Full	0
Baths Half	0
Year Built	1998
Type	
Block Number	374
Listing #	595603
Taxes	16237.00

#### COMMENTS

*Spacious partial Two-Story Warehouse in Pleasantville – Approx. 5,000 Sq Ft Built in 1998, this well-maintained warehouse offers approximately 5,000 square feet of versatile space in a prime Pleasantville location. The first floor includes an office area that can easily be converted into a showroom, while the second floor features additional space ideal for two more offi...*

#### PROPERTY FEATURES

Exterior Brick	ParkingGarage 6 to 10 Spaces	InteriorFeatures 220 Volt Electricity Restroom Storage	Basement Slab
Water Public	Sewer Public Sewer		

#### CONTACT



Ask for Theresa Maina  
Berger Realty Inc  
3160 Asbury Avenue, Ocean City  
Call: 609-703-7725  
Email to: tam@bergerrealty.com

Scan to see Property page.

