

Berger Realty

Since 1926



Berger Realty, Inc.
3160 Asbury Avenue
Ocean City, NJ 08226
1-877-237-4371 / 609-399-0076
info@bergerrealty.com



222 New, Pleasantville, NJ, 08232

Price \$695,000.00

PROPERTY DETAILS

Total Rooms	
Bedrooms	0
Baths Full	0
Baths Half	0
Year Built	1998
Type	
Block Number	374
Listing #	595603
Taxes	16237.00

COMMENTS

Spacious partial Two-Story Warehouse in Pleasantville – Approx. 5,000 Sq Ft Built in 1998, this well-maintained warehouse offers approximately 5,000 square feet of versatile space in a prime Pleasantville location. The first floor includes an office area that can easily be converted into a showroom, while the second floor features additional space ideal for two more offi...

PROPERTY FEATURES

Exterior Brick	ParkingGarage 6 to 10 Spaces	InteriorFeatures 220 Volt Electricity Restroom Storage	Basement Slab
Water Public	Sewer Public Sewer		

CONTACT



Ask for Sara Varani
Berger Realty Inc
3160 Asbury Avenue, Ocean City
Call:
Email to: sev@bergerrealty.com

Scan to see Property page.



Berger Realty

Since 1926



Berger Realty, Inc.
3160 Asbury Avenue
Ocean City, NJ 08226
1-877-237-4371 / 609-399-0076
info@bergerrealty.com



222 New, Pleasantville, NJ, 08232

Price \$695,000.00

PROPERTY DETAILS

Total Rooms	
Bedrooms	0
Baths Full	0
Baths Half	0
Year Built	1998
Type	
Block Number	374
Listing #	595603
Taxes	16237.00

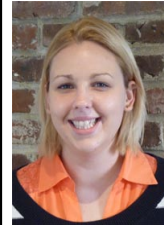
COMMENTS

Spacious partial Two-Story Warehouse in Pleasantville – Approx. 5,000 Sq Ft Built in 1998, this well-maintained warehouse offers approximately 5,000 square feet of versatile space in a prime Pleasantville location. The first floor includes an office area that can easily be converted into a showroom, while the second floor features additional space ideal for two more offi...

PROPERTY FEATURES

Exterior Brick	ParkingGarage 6 to 10 Spaces	InteriorFeatures 220 Volt Electricity Restroom Storage	Basement Slab
Water Public	Sewer Public Sewer		

CONTACT



Ask for Sara Varani
Berger Realty Inc
3160 Asbury Avenue, Ocean City
Call:
Email to: sev@bergerrealty.com

Scan to see Property page.

