



Berger Realty, Inc.
3160 Asbury Avenue
Ocean City, NJ 08226
1-877-237-4371 / 609-399-0076
info@bergerrealty.com



1050 Shore, Linwood, NJ, 08221

Price \$849,000.00



PROPERTY DETAILS

Total Rooms	
Bedrooms	0
Baths Full	0
Baths Half	0
Year Built	
Type	
Block Number	112
Listing #	595597
Taxes	10682.00

COMMENTS

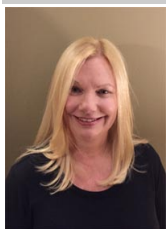
Unlock four streams of steady income with this unique, versatile property in the heart of Linwood! 1050 Shore Road offers a rare combination of commercial and residential units, making it a perfect addition to any investor's portfolio. Commercial Space: High-visibility storefront ideal for retail, office, or service businesses. 3 Bed / 2 Bath Residential Unit: Spacious la...

PROPERTY FEATURES

ParkingGarage	Heating	Cooling	Water
One Car	Baseboard	Central	Public

Sewer
Public Sewer

CONTACT



Ask for Dawn Warren
Berger Realty Inc
3160 Asbury Avenue, Ocean City
Call: 609-432-4966
Email to: dew@bergerrealty.com

Scan to see Property page.



Berger Realty, Inc.
3160 Asbury Avenue
Ocean City, NJ 08226
1-877-237-4371 / 609-399-0076
info@bergerrealty.com



1050 Shore, Linwood, NJ, 08221

Price \$849,000.00



PROPERTY DETAILS

Total Rooms	
Bedrooms	0
Baths Full	0
Baths Half	0
Year Built	
Type	
Block Number	112
Listing #	595597
Taxes	10682.00

COMMENTS

Unlock four streams of steady income with this unique, versatile property in the heart of Linwood! 1050 Shore Road offers a rare combination of commercial and residential units, making it a perfect addition to any investor's portfolio. Commercial Space: High-visibility storefront ideal for retail, office, or service businesses. 3 Bed / 2 Bath Residential Unit: Spacious la...

PROPERTY FEATURES

ParkingGarage	Heating	Cooling	Water
One Car	Baseboard	Central	Public

Sewer
Public Sewer

CONTACT



Ask for Dawn Warren
Berger Realty Inc
3160 Asbury Avenue, Ocean City
Call: 609-432-4966
Email to: dew@bergerrealty.com

Scan to see Property page.

