



Berger Realty, Inc.
3160 Asbury Avenue
Ocean City, NJ 08226
1-877-237-4371 / 609-399-0076
info@bergerrealty.com



333 Betsey Scull, Egg Harbor Township, NJ, 08234

Price \$1,200,000.00

PROPERTY DETAILS

Total Rooms	9
Bedrooms	3
Baths Full	2
Baths Half	0
Year Built	1958
Type	Single Family
Block Number	8201
Listing #	595588
Taxes	8563.00

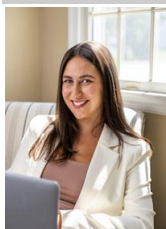
COMMENTS

First watch the virtual tour and then imagine yourself living on the water with access to the Great Egg Harbor River. Then take the boat to the ocean and enjoy the relaxing days on the water. Fishing and fun for years to come! The privacy you will also enjoy here is a key factor. Almost 12.5 acres total. There is a separately deeded piece of land (327 Betsey Scull) which i...

PROPERTY FEATURES

Exterior Vinyl	OutsideFeatures Pool-In Ground	ParkingGarage Attached Garage Auto Door Opener Three or More Cars	OtherRooms Dining Room Eat In Kitchen Laundry/Utility Room Pantry Primary BR on 1st floor Storage Attic
InteriorFeatures Carbon Monoxide Detector Smoke/Fire Alarm Storage	AppliancesIncluded Dishwasher Dryer Gas Stove Microwave Refrigerator Washer	Basement Crawl Space	Heating Baseboard Oil Tank Above Ground
Cooling Central	Water Well	Sewer Septic	

CONTACT



Ask for Lauren Greiner
Berger Realty Inc
3160 Asbury Avenue, Ocean City
Call: 609-602-5960
Email to: img@bergerrealty.com

Scan to view property page.



Berger Realty, Inc.
3160 Asbury Avenue
Ocean City, NJ 08226
1-877-237-4371 / 609-399-0076
info@bergerrealty.com



333 Betsey Scull, Egg Harbor Township, NJ, 08234

Price \$1,200,000.00

PROPERTY DETAILS

Total Rooms	9
Bedrooms	3
Baths Full	2
Baths Half	0
Year Built	1958
Type	Single Family
Block Number	8201
Listing #	595588
Taxes	8563.00

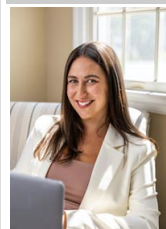
COMMENTS

First watch the virtual tour and then imagine yourself living on the water with access to the Great Egg Harbor River. Then take the boat to the ocean and enjoy the relaxing days on the water. Fishing and fun for years to come! The privacy you will also enjoy here is a key factor. Almost 12.5 acres total. There is a separately deeded piece of land (327 Betsey Scull) which i...

PROPERTY FEATURES

Exterior Vinyl	OutsideFeatures Pool-In Ground	ParkingGarage Attached Garage Auto Door Opener Three or More Cars	OtherRooms Dining Room Eat In Kitchen Laundry/Utility Room Pantry Primary BR on 1st floor Storage Attic
InteriorFeatures Carbon Monoxide Detector Smoke/Fire Alarm Storage	AppliancesIncluded Dishwasher Dryer Gas Stove Microwave Refrigerator Washer	Basement Crawl Space	Heating Baseboard Oil Tank Above Ground
Cooling Central	Water Well	Sewer Septic	

CONTACT



Ask for Lauren Greiner
Berger Realty Inc
3160 Asbury Avenue, Ocean City
Call: 609-602-5960
Email to: img@bergerrealty.com

Scan to view property page.

