

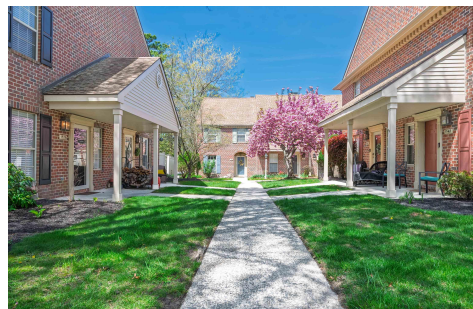


Berger Realty, Inc.
3160 Asbury Avenue
Ocean City, NJ 08226
1-877-237-4371 / 609-399-0076
info@bergerrealty.com



1526 Hamilton, 226, Mays Landing, NJ, 08330

Price \$244,900.00



PROPERTY DETAILS

Total Rooms	7
Bedrooms	2
Baths Full	1
Baths Half	1
Year Built	1999
Type	Condo
Block Number	1070
Listing #	595535
Taxes	3723.00

COMMENTS

Beautiful end-unit townhome in the most charming courtyard of Mays Landing Village! The picture-perfect front porch warmly welcomes you into this gem. Inside, you'll find gleaming hardwood floors and a stunning fireplace that anchor the elegant living room. The dedicated dining room is ideal for entertaining, while the quaint kitchen is ready for you to get creative with ...

PROPERTY FEATURES

Exterior Brick	ParkingGarage None	OtherRooms Dining Area Laundry/Utility Room Storage Attic	InteriorFeatures Fireplace(s) Pets Allowed
Heating Gas-Natural	Cooling Central	Water Public Water	Sewer Public Sewer

CONTACT



Ask for Michael Devlin
Berger Realty Inc
3160 Asbury Avenue, Ocean City
Call: 609-306-3730
Email to: msd@bergerrealty.com

Scan to see Property page.

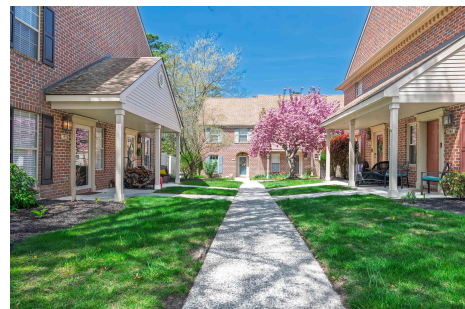


Berger Realty, Inc.
3160 Asbury Avenue
Ocean City, NJ 08226
1-877-237-4371 / 609-399-0076
info@bergerrealty.com



1526 Hamilton, 226, Mays Landing, NJ, 08330

Price \$244,900.00



PROPERTY DETAILS

Total Rooms	7
Bedrooms	2
Baths Full	1
Baths Half	1
Year Built	1999
Type	Condo
Block Number	1070
Listing #	595535
Taxes	3723.00

COMMENTS

Beautiful end-unit townhome in the most charming courtyard of Mays Landing Village! The picture-perfect front porch warmly welcomes you into this gem. Inside, you'll find gleaming hardwood floors and a stunning fireplace that anchor the elegant living room. The dedicated dining room is ideal for entertaining, while the quaint kitchen is ready for you to get creative with ...

PROPERTY FEATURES

Exterior Brick	ParkingGarage None	OtherRooms Dining Area Laundry/Utility Room Storage Attic	InteriorFeatures Fireplace(s) Pets Allowed
Heating Gas-Natural	Cooling Central	Water Public Water	Sewer Public Sewer

CONTACT



Ask for Michael Devlin
Berger Realty Inc
3160 Asbury Avenue, Ocean City
Call: 609-306-3730
Email to: msd@bergerrealty.com

Scan to see Property page.

