

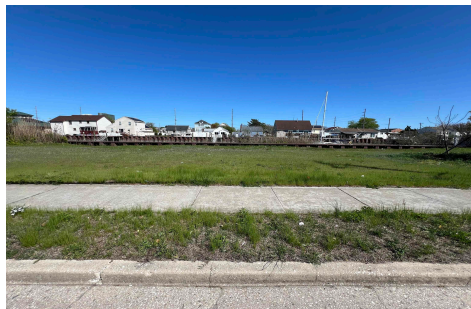


Berger Realty, Inc.
3160 Asbury Avenue
Ocean City, NJ 08226
1-877-237-4371 / 609-399-0076
info@bergerrealty.com



2020 Murray, Atlantic City, NJ, 08401

Price \$100,000.00



PROPERTY DETAILS

Total Rooms	
Bedrooms	0
Baths Full	0
Baths Half	0
Year Built	
Type	
Block Number	728
Listing #	595519
Taxes	2468.00

COMMENTS

Welcome to 2020 Murray Avenue – a rare and exciting opportunity to own a buildable waterfront lot in the desirable Venice Park section of Atlantic City. This 50 x 105 ft lot offers the perfect canvas for your dream home, vacation getaway, or investment property. Enjoy stunning water views and direct access to the beauty and serenity of life by the bay. The sale includes ...

PROPERTY FEATURES

CONTACT



Ask for Leon Grisbaum
Berger Realty Inc
3160 Asbury Avenue, Ocean City
Call:
Email to:

Scan to see Property page.

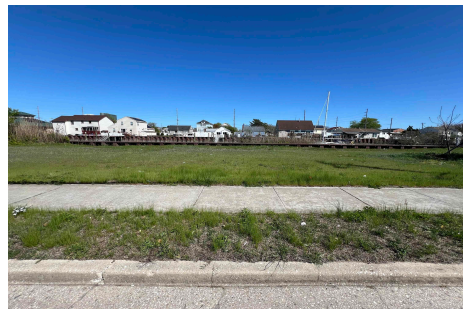


Berger Realty, Inc.
3160 Asbury Avenue
Ocean City, NJ 08226
1-877-237-4371 / 609-399-0076
info@bergerrealty.com



2020 Murray, Atlantic City, NJ, 08401

Price \$100,000.00



PROPERTY DETAILS

Total Rooms	
Bedrooms	0
Baths Full	0
Baths Half	0
Year Built	
Type	
Block Number	728
Listing #	595519
Taxes	2468.00

COMMENTS

Welcome to 2020 Murray Avenue – a rare and exciting opportunity to own a buildable waterfront lot in the desirable Venice Park section of Atlantic City. This 50 x 105 ft lot offers the perfect canvas for your dream home, vacation getaway, or investment property. Enjoy stunning water views and direct access to the beauty and serenity of life by the bay. The sale includes ...

PROPERTY FEATURES

CONTACT



Ask for Leon Grisbaum
Berger Realty Inc
3160 Asbury Avenue, Ocean City
Call:
Email to:

Scan to see Property page.

