



Berger Realty, Inc  
1330 Bay Avenue  
Ocean City, NJ 08226  
609-391-1330/609-391-1300  
info@bergerrealty.com



106 Leo, Egg Harbor Township, NJ, 08234

Price \$39,900.00

PHOTO NOT AVAILABLE



#### PROPERTY DETAILS

Total Rooms	
Bedrooms	0
Baths Full	0
Baths Half	0
Year Built	
Type	
Block Number	2804
Listing #	595513
Taxes	164.00

#### COMMENTS

**SELLER DOES NOT HAVE ANY APPROVALS. BUYER MUST DO THEIR OWN DUE DILIGENCE.** Residential lot in understated neighborhood at the end of Leo Avenue. A 1/4 Pineland credit due to be purchased for individual lot sales. For multiple lot sales, the Buyer must do their own due diligence. Utilities are available. **BUYER MUST DO THEIR OWN DUE DILIGENCE....**

#### PROPERTY FEATURES

#### CONTACT



Ask for Joanne Kelly  
Berger Realty Inc  
1330 Bay Avenue, Ocean City  
Call: 609-425-2106  
Email to: jmk@bergerrealty.com

Scan to see Property page.



Berger Realty, Inc  
1330 Bay Avenue  
Ocean City, NJ 08226  
609-391-1330/609-391-1300  
info@bergerrealty.com



106 Leo, Egg Harbor Township, NJ, 08234

Price \$39,900.00

PHOTO NOT AVAILABLE



#### PROPERTY DETAILS

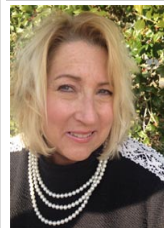
Total Rooms	
Bedrooms	0
Baths Full	0
Baths Half	0
Year Built	
Type	
Block Number	2804
Listing #	595513
Taxes	164.00

#### COMMENTS

**SELLER DOES NOT HAVE ANY APPROVALS. BUYER MUST DO THEIR OWN DUE DILIGENCE.** Residential lot in understated neighborhood at the end of Leo Avenue. A 1/4 Pineland credit due to be purchased for individual lot sales. For multiple lot sales, the Buyer must do their own due diligence. Utilities are available. **BUYER MUST DO THEIR OWN DUE DILIGENCE....**

#### PROPERTY FEATURES

#### CONTACT



Ask for Joanne Kelly  
Berger Realty Inc  
1330 Bay Avenue, Ocean City  
Call: 609-425-2106  
Email to: jmk@bergerrealty.com

Scan to see Property page.

