



Berger Realty, Inc
1330 Bay Avenue
Ocean City, NJ 08226
609-391-1330/609-391-1300
info@bergerrealty.com



4 SPATTERDOCK LANE, Linwood, NJ, 08221

Price \$224,500.00



PROPERTY DETAILS

| | |
|--------------|---------|
| Total Rooms | |
| Bedrooms | 0 |
| Baths Full | 0 |
| Baths Half | 0 |
| Year Built | |
| Type | |
| Block Number | 1 |
| Listing # | 595490 |
| Taxes | 3815.00 |

COMMENTS

GREAT .90 ACRE LINWOOD WATERFRONT HOMESITE WITH MEADOW AND WATER VIEWS ON A GREAT PRIVATE CUL-DE-SAC LOCATION WITH BUILDING APPROVALS. INCLUDES SURVEY, PLOT PLAN, LATERALS AND CAFRA PERMIT....

PROPERTY FEATURES

CONTACT



Ask for John Tonkinson
Berger Realty Inc
1330 Bay Avenue, Ocean City
Call: 609-741-7841
Email to: jtn@bergerrealty.com

Scan to see Property page.

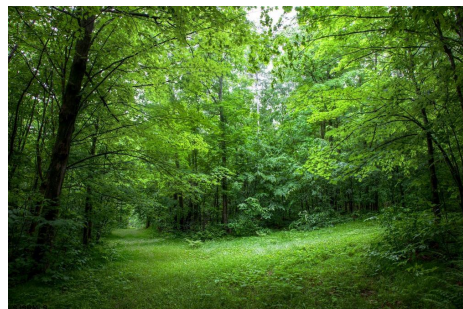


Berger Realty, Inc
1330 Bay Avenue
Ocean City, NJ 08226
609-391-1330/609-391-1300
info@bergerrealty.com



4 SPATTERDOCK LANE, Linwood, NJ, 08221

Price \$224,500.00



PROPERTY DETAILS

| | |
|--------------|---------|
| Total Rooms | |
| Bedrooms | 0 |
| Baths Full | 0 |
| Baths Half | 0 |
| Year Built | |
| Type | |
| Block Number | 1 |
| Listing # | 595490 |
| Taxes | 3815.00 |

COMMENTS

GREAT .90 ACRE LINWOOD WATERFRONT HOMESITE WITH MEADOW AND WATER VIEWS ON A GREAT PRIVATE CUL-DE-SAC LOCATION WITH BUILDING APPROVALS. INCLUDES SURVEY, PLOT PLAN, LATERALS AND CAFRA PERMIT....

PROPERTY FEATURES

CONTACT



Ask for John Tonkinson
Berger Realty Inc
1330 Bay Avenue, Ocean City
Call: 609-741-7841
Email to: jtn@bergerrealty.com

Scan to see Property page.

