

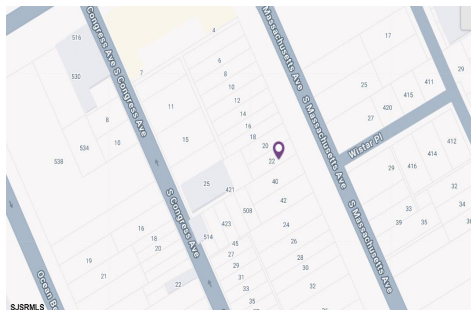


Berger Realty, Inc.  
3160 Asbury Avenue  
Ocean City, NJ 08226  
1-877-237-4371 / 609-399-0076  
info@bergerrealty.com



22 Massachusetts Ave, Atlantic City, NJ, 08401

Price \$19,500.00



#### PROPERTY DETAILS

Total Rooms	0
Bedrooms	0
Baths Full	0
Baths Half	0
Year Built	
Type	
Block Number	130
Listing #	595329
Taxes	463.00

#### COMMENTS

*Vacant land located in the Casino reinvestment development. Lot size is a approximately 20x67. Please call CRDA for developmentquestions609-347-0500....*

#### PROPERTY FEATURES

#### CONTACT



Ask for Sara Varani  
Berger Realty Inc  
3160 Asbury Avenue, Ocean City  
Call:  
Email to: sev@bergerrealty.com

Scan to see Property page.

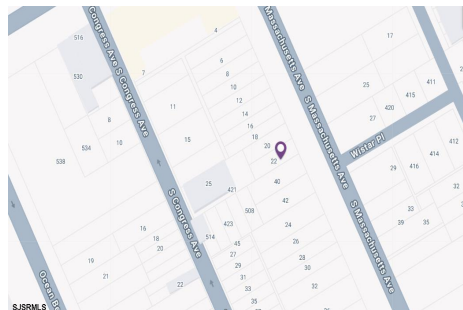


Berger Realty, Inc.  
3160 Asbury Avenue  
Ocean City, NJ 08226  
1-877-237-4371 / 609-399-0076  
info@bergerrealty.com



22 Massachusetts Ave, Atlantic City, NJ, 08401

Price \$19,500.00



#### PROPERTY DETAILS

Total Rooms	0
Bedrooms	0
Baths Full	0
Baths Half	0
Year Built	
Type	
Block Number	130
Listing #	595329
Taxes	463.00

#### COMMENTS

*Vacant land located in the Casino reinvestment development. Lot size is a approximately 20x67. Please call CRDA for developmentquestions609-347-0500....*

#### PROPERTY FEATURES

#### CONTACT



Ask for Sara Varani  
Berger Realty Inc  
3160 Asbury Avenue, Ocean City  
Call:  
Email to: sev@bergerrealty.com

Scan to see Property page.

