

# Berger Realty

Since 1926



Berger Realty, Inc.  
3160 Asbury Avenue  
Ocean City, NJ 08226  
1-877-237-4371 / 609-399-0076  
info@bergerrealty.com



4805 Ventnor, 1, Ventnor, NJ, 08406

Price \$49,900.00

## PROPERTY DETAILS

Total Rooms	4
Bedrooms	1
Baths Full	1
Baths Half	0
Year Built	1920
Type	Condo
Block Number	87
Listing #	595265
Taxes	984.00

## COMMENTS

*Opportunity knocks with this 1 bed / 1 bath basement apartment on the market for under \$50,000. This special price is backed by a very motivated seller. Thought to have possibly once housed the building supervisor, this below-ground unit features a side entrance located under the fire escape, next to the building's shared laundry and bike storage areas. This area does no...*

## PROPERTY FEATURES

ParkingGarage	Heating	Water	Sewer
None	Gas-Natural	Public Water	Public Sewer

## CONTACT



Ask for Sara Varani  
Berger Realty Inc  
3160 Asbury Avenue, Ocean City  
Call:  
Email to: sev@bergerrealty.com

Scan to see Property page.



# Berger Realty

Since 1926



Berger Realty, Inc.  
3160 Asbury Avenue  
Ocean City, NJ 08226  
1-877-237-4371 / 609-399-0076  
info@bergerrealty.com



4805 Ventnor, 1, Ventnor, NJ, 08406

Price \$49,900.00

## PROPERTY DETAILS

Total Rooms	4
Bedrooms	1
Baths Full	1
Baths Half	0
Year Built	1920
Type	Condo
Block Number	87
Listing #	595265
Taxes	984.00

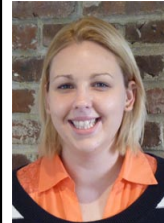
## COMMENTS

*Opportunity knocks with this 1 bed / 1 bath basement apartment on the market for under \$50,000. This special price is backed by a very motivated seller. Thought to have possibly once housed the building supervisor, this below-ground unit features a side entrance located under the fire escape, next to the building's shared laundry and bike storage areas. This area does no...*

## PROPERTY FEATURES

ParkingGarage	Heating	Water	Sewer
None	Gas-Natural	Public Water	Public Sewer

## CONTACT



Ask for Sara Varani  
Berger Realty Inc  
3160 Asbury Avenue, Ocean City  
Call:  
Email to: sev@bergerrealty.com

Scan to see Property page.

