

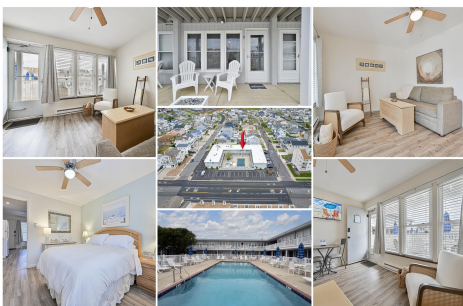


Berger Realty, Inc.
3160 Asbury Avenue
Ocean City, NJ 08226
1-877-237-4371 / 609-399-0076
info@bergerrealty.com



413 Brigantine Ave, 28, Brigantine, NJ, 08203

Price \$309,000.00



PROPERTY DETAILS

Total Rooms	2
Bedrooms	1
Baths Full	1
Baths Half	0
Year Built	1954
Type	Condo
Block Number	15.09
Listing #	595133
Taxes	2309.00

COMMENTS

Located on the north end of Brigantine, enjoy this beautiful beach oasis! Located on the first floor, this one bedroom, one bathroom, condo, is turnkey with a neutral pallet and perfectly located, across from the beach, and with a pool! Walk up to find a cozy front sitting area, a nice area to enjoy your morning coffee while you soak in the sounds of the nearby ocean and v...

PROPERTY FEATURES

ParkingGarage	Heating	Cooling	Water
None	Baseboard Electric	Wall Units	Public Water

Sewer
Public Sewer

CONTACT



Ask for Francis Cuomo
Berger Realty Inc
3160 Asbury Avenue, Ocean City
Call: 609-305-3503
Email to: fmc@bergerrealty.com

Scan to see Property page.



Berger Realty, Inc.
3160 Asbury Avenue
Ocean City, NJ 08226
1-877-237-4371 / 609-399-0076
info@bergerrealty.com



413 Brigantine Ave, 28, Brigantine, NJ, 08203

Price \$309,000.00



PROPERTY DETAILS

Total Rooms	2
Bedrooms	1
Baths Full	1
Baths Half	0
Year Built	1954
Type	Condo
Block Number	15.09
Listing #	595133
Taxes	2309.00

COMMENTS

Located on the north end of Brigantine, enjoy this beautiful beach oasis! Located on the first floor, this one bedroom, one bathroom, condo, is turnkey with a neutral pallet and perfectly located, across from the beach, and with a pool! Walk up to find a cozy front sitting area, a nice area to enjoy your morning coffee while you soak in the sounds of the nearby ocean and v...

PROPERTY FEATURES

ParkingGarage	Heating	Cooling	Water
None	Baseboard Electric	Wall Units	Public Water

Sewer
Public Sewer

CONTACT



Ask for Francis Cuomo
Berger Realty Inc
3160 Asbury Avenue, Ocean City
Call: 609-305-3503
Email to: fmc@bergerrealty.com

Scan to see Property page.

