

Berger Realty

Since 1928



Berger Realty, Inc.
55th & Haven Avenue
Ocean City, NJ 08226
609-399-0040
info@bergerrealty.com



1115 Riverside Dr, Mays Landing, NJ, 08330

Price \$1,199,000.00



PROPERTY DETAILS

Total Rooms	10
Bedrooms	4
Baths Full	4
Baths Half	2
Year Built	1987
Type	Single Family
Block Number	119
Listing #	595057
Taxes	15429.00

COMMENTS

Water front living on the beautiful Great Egg Harbor River, this fantastically maintained custom-built home will truly take your breath away. Park in your covered-front entrance and step into your personal paradise. This expansive home features sweeping views of the river upon entrance, and throughout the home. The recently-updated chef's kitchen boasts newer stainless-st...

PROPERTY FEATURES

Exterior	ParkingGarage	Heating	Cooling
Stone	Two Car	Forced Air	Central
Vinyl		Gas-Natural	
Wood			
Water	Sewer		
Well	Septic		

CONTACT



Ask for Ellen L. Senft
Berger Realty Inc
109 E 55th St., Ocean City
Call: 609-231-5733
Email to: els@bergerrealty.com

Scan to see Property page.



Berger Realty

Since 1928

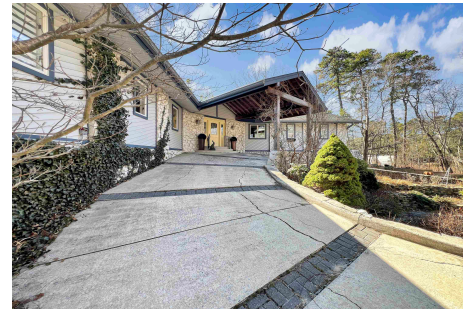


Berger Realty, Inc.
55th & Haven Avenue
Ocean City, NJ 08226
609-399-0040
info@bergerrealty.com



1115 Riverside Dr, Mays Landing, NJ, 08330

Price \$1,199,000.00



PROPERTY DETAILS

Total Rooms	10
Bedrooms	4
Baths Full	4
Baths Half	2
Year Built	1987
Type	Single Family
Block Number	119
Listing #	595057
Taxes	15429.00

COMMENTS

Water front living on the beautiful Great Egg Harbor River, this fantastically maintained custom-built home will truly take your breath away. Park in your covered-front entrance and step into your personal paradise. This expansive home features sweeping views of the river upon entrance, and throughout the home. The recently-updated chef's kitchen boasts newer stainless-st...

PROPERTY FEATURES

Exterior	ParkingGarage	Heating	Cooling
Stone	Two Car	Forced Air	Central
Vinyl		Gas-Natural	
Wood			
Water	Sewer		
Well	Septic		

CONTACT



Ask for Ellen L. Senft
Berger Realty Inc
109 E 55th St., Ocean City
Call: 609-231-5733
Email to: els@bergerrealty.com

Scan to see Property page.

