

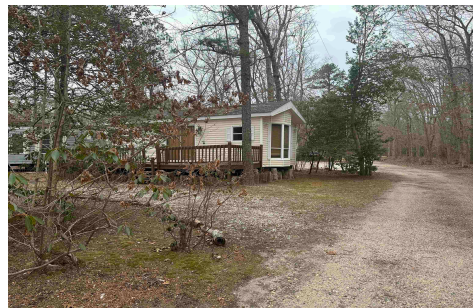


Berger Realty, Inc.  
3160 Asbury Avenue  
Ocean City, NJ 08226  
1-877-237-4371 / 609-399-0076  
info@bergerrealty.com



103 -lot 901 Cumberland Ave, Estell Manor, NJ, 08319

Price \$59,900.00



#### PROPERTY DETAILS

Total Rooms	4
Bedrooms	1
Baths Full	1
Baths Half	0
Year Built	
Type	Single Family
Block Number	4
Listing #	594662
Taxes	521.00

#### COMMENTS

*This lovingly cared for corner vacation property (#901) at Lazy River Campground Condominium, Estelle Manor. 37.5' x 12' secluded mobile home facing the woods. Enjoy all the outside amenities: pool, fresh water spring fed lake with swim platform, beach, children's playground, community room & pavilion, on site laundry. 8' x 37' deck w/two sets of steps to grade...*

#### PROPERTY FEATURES

Exterior Vinyl	OutsideFeatures Porch	ParkingGarage None	Heating Gas-Propane
Cooling Window Units	Water Private	Sewer Private	

#### CONTACT



Ask for Ken Sedberry  
Berger Realty Inc  
3160 Asbury Avenue, Ocean City  
Call: 609-442-3850  
Email to: kas@bergerrealty.com

Scan to see Property page.



Berger Realty, Inc.  
3160 Asbury Avenue  
Ocean City, NJ 08226  
1-877-237-4371 / 609-399-0076  
info@bergerrealty.com



103 -lot 901 Cumberland Ave, Estell Manor, NJ, 08319

Price \$59,900.00



#### PROPERTY DETAILS

Total Rooms	4
Bedrooms	1
Baths Full	1
Baths Half	0
Year Built	
Type	Single Family
Block Number	4
Listing #	594662
Taxes	521.00

#### COMMENTS

*This lovingly cared for corner vacation property (#901) at Lazy River Campground Condominium, Estelle Manor. 37.5' x 12' secluded mobile home facing the woods. Enjoy all the outside amenities: pool, fresh water spring fed lake with swim platform, beach, children's playground, community room & pavilion, on site laundry. 8' x 37' deck w/two sets of steps to grade...*

#### PROPERTY FEATURES

Exterior Vinyl	OutsideFeatures Porch	ParkingGarage None	Heating Gas-Propane
Cooling Window Units	Water Private	Sewer Private	

#### CONTACT



Ask for Ken Sedberry  
Berger Realty Inc  
3160 Asbury Avenue, Ocean City  
Call: 609-442-3850  
Email to: kas@bergerrealty.com

Scan to see Property page.

