

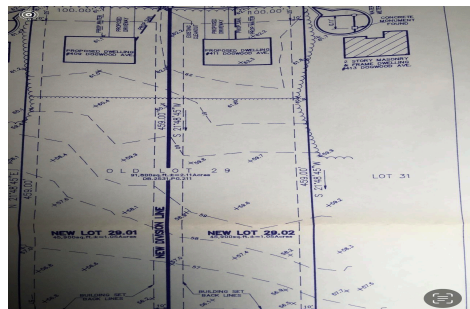


Berger Realty, Inc.  
3160 Asbury Avenue  
Ocean City, NJ 08226  
1-877-237-4371 / 609-399-0076  
info@bergerrealty.com



411 DOGWOOD, Egg Harbor Township, NJ, 08234

Price \$150,000.00



#### PROPERTY DETAILS

Total Rooms	
Bedrooms	0
Baths Full	0
Baths Half	0
Year Built	
Type	
Block Number	3201
Listing #	594480
Taxes	1670.00

#### COMMENTS

*Build your new home on a Dogwood ave in Egg Harbor Township. One vacant lot left; in a size of 1,04 acres; with dimensions 94 x 482. All utilities on the street, zoned residential, buildable lot for a single family home Top location for a family oriented neighborhood. Located with walking distance to the enormous and beautiful Tony Canale Park, walking distance to the 7 m...*

#### PROPERTY FEATURES

#### CONTACT



Ask for Dale Collins  
Berger Realty Inc  
3160 Asbury Avenue, Ocean City  
Call: 609-548-1539  
Email to: djc@bergerrealty.com  
http://www.BADERCOLLINS.com

Scan to see Property page.

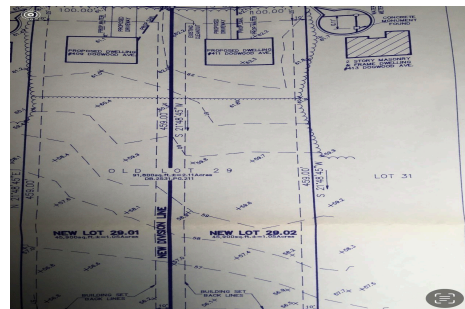


Berger Realty, Inc.  
3160 Asbury Avenue  
Ocean City, NJ 08226  
1-877-237-4371 / 609-399-0076  
info@bergerrealty.com



411 DOGWOOD, Egg Harbor Township, NJ, 08234

Price \$150,000.00



#### PROPERTY DETAILS

Total Rooms	
Bedrooms	0
Baths Full	0
Baths Half	0
Year Built	
Type	
Block Number	3201
Listing #	594480
Taxes	1670.00

#### COMMENTS

*Build your new home on a Dogwood ave in Egg Harbor Township. One vacant lot left; in a size of 1,04 acres; with dimensions 94 x 482. All utilities on the street, zoned residential, buildable lot for a single family home Top location for a family oriented neighborhood. Located with walking distance to the enormous and beautiful Tony Canale Park, walking distance to the 7 m...*

#### PROPERTY FEATURES

#### CONTACT



Ask for Dale Collins  
Berger Realty Inc  
3160 Asbury Avenue, Ocean City  
Call: 609-548-1539  
Email to: djc@bergerrealty.com  
http://www.BADERCOLLINS.com

Scan to see Property page.

