

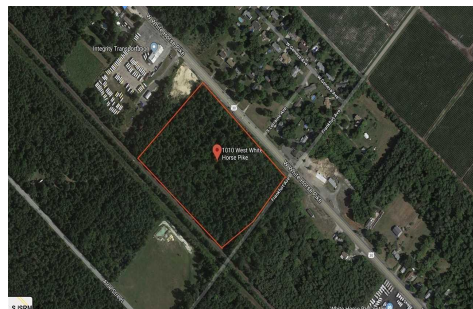


Berger Realty, Inc.  
3160 Asbury Avenue  
Ocean City, NJ 08226  
1-877-237-4371 / 609-399-0076  
info@bergerrealty.com



1010 White Horse, Galloway Township, NJ, 08215

Price \$89,000.00



#### PROPERTY DETAILS

Total Rooms	
Bedrooms	0
Baths Full	0
Baths Half	0
Year Built	
Type	
Block Number	256
Listing #	594407
Taxes	1742.00

#### COMMENTS

*Amazing location and opportunity to develop in Galloway Township on the Heavily Traveled White Horse Pike. Highway Commercial 2 District, this lot is zoned to build anything from restaurants, car dealerships, department stores, commercial recreation parks, personal service shops, business offices, bakeries, grocery stores, hotels, and more...this lot is full of potential! ...*

#### PROPERTY FEATURES

#### CONTACT



Ask for Steven Spengler  
Berger Realty Inc  
3160 Asbury Avenue, Ocean City  
Call: 609-425-9253  
Email to: srs@bergerrealty.com

Scan to see Property page.

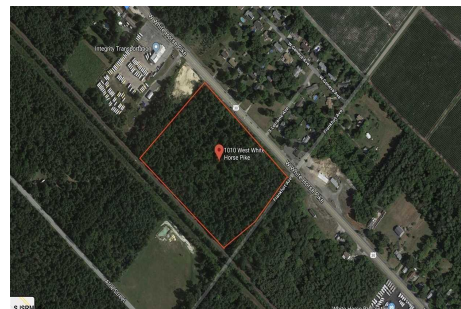


Berger Realty, Inc.  
3160 Asbury Avenue  
Ocean City, NJ 08226  
1-877-237-4371 / 609-399-0076  
info@bergerrealty.com



1010 White Horse, Galloway Township, NJ, 08215

Price \$89,000.00



#### PROPERTY DETAILS

Total Rooms	
Bedrooms	0
Baths Full	0
Baths Half	0
Year Built	
Type	
Block Number	256
Listing #	594407
Taxes	1742.00

#### COMMENTS

*Amazing location and opportunity to develop in Galloway Township on the Heavily Traveled White Horse Pike. Highway Commercial 2 District, this lot is zoned to build anything from restaurants, car dealerships, department stores, commercial recreation parks, personal service shops, business offices, bakeries, grocery stores, hotels, and more...this lot is full of potential! ...*

#### PROPERTY FEATURES

#### CONTACT



Ask for Steven Spengler  
Berger Realty Inc  
3160 Asbury Avenue, Ocean City  
Call: 609-425-9253  
Email to: srs@bergerrealty.com

Scan to see Property page.

