



Berger Realty, Inc.
3160 Asbury Avenue
Ocean City, NJ 08226
1-877-237-4371 / 609-399-0076
info@bergerrealty.com



1101 Ocean Ave, Ocean City, NJ, 08226

Price \$25,000,000.00



PROPERTY DETAILS

Total Rooms	
Bedrooms	0
Baths Full	0
Baths Half	0
Year Built	
Type	
Block Number	1101
Listing #	594386
Taxes	56347.00

COMMENTS

Current Parking Lot located at 1101 Ocean Avenue adjacent to the landmark Flanders Hotel in Ocean City, NJ, offers an approved 111-unit condominium hotel development on a prime beach block vacant lot. This six-story boutique midrise features 111 spacious two- and three-bedroom condo units, each 1,100 SF, with ocean, bay, and pool views. With Final Site Plan approvals secur...

PROPERTY FEATURES

ParkingGarage
11 or More Spaces

CONTACT



Ask for Dori Adams
Berger Realty Inc
3160 Asbury Avenue, Ocean City
Call: 609-602-2545
Email to: doa@bergerrealty.com

Scan to see Property page.

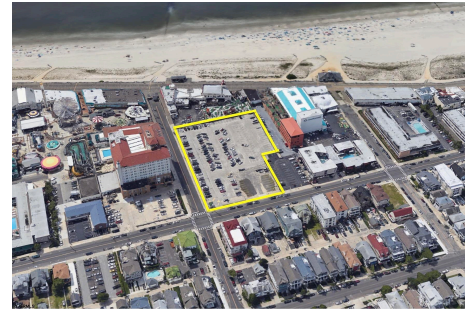


Berger Realty, Inc.
3160 Asbury Avenue
Ocean City, NJ 08226
1-877-237-4371 / 609-399-0076
info@bergerrealty.com



1101 Ocean Ave, Ocean City, NJ, 08226

Price \$25,000,000.00



PROPERTY DETAILS

Total Rooms	
Bedrooms	0
Baths Full	0
Baths Half	0
Year Built	
Type	
Block Number	1101
Listing #	594386
Taxes	56347.00

COMMENTS

Current Parking Lot located at 1101 Ocean Avenue adjacent to the landmark Flanders Hotel in Ocean City, NJ, offers an approved 111-unit condominium hotel development on a prime beach block vacant lot. This six-story boutique midrise features 111 spacious two- and three-bedroom condo units, each 1,100 SF, with ocean, bay, and pool views. With Final Site Plan approvals secur...

PROPERTY FEATURES

ParkingGarage
11 or More Spaces

CONTACT



Ask for Dori Adams
Berger Realty Inc
3160 Asbury Avenue, Ocean City
Call: 609-602-2545
Email to: doa@bergerrealty.com

Scan to see Property page.

