



Berger Realty, Inc.
3160 Asbury Avenue
Ocean City, NJ 08226
1-877-237-4371 / 609-399-0076
info@bergerrealty.com



6414 Strand Ave, Mays Landing, NJ, 08330

Price \$395,000.00



PROPERTY DETAILS

Total Rooms	7
Bedrooms	3
Baths Full	2
Baths Half	0
Year Built	
Type	Single Family
Block Number	538
Listing #	594223
Taxes	786.00

COMMENTS

CHOOSE YOUR COLORS with this New Construction on a Private 1-Acre Wooded Lot This brand-new 1,300 sq. ft. home is set 200 feet back from the road for added privacy. Located just 5 miles from the town centers of Mays Landing and Buena, this home offers both tranquility and convenience. Home Features: 3 Bedrooms, 2 Baths Open-concept living area with a split-bedroom desig...

PROPERTY FEATURES

ParkingGarage	Heating	Water	Sewer
None	Gas-Natural	Well	Septic

CONTACT



Ask for Joyce McMahon
Berger Realty Inc
3160 Asbury Avenue, Ocean City
Call:
Email to: jmm@bergerrealty.com

Scan to see Property page.



Berger Realty, Inc.
3160 Asbury Avenue
Ocean City, NJ 08226
1-877-237-4371 / 609-399-0076
info@bergerrealty.com



6414 Strand Ave, Mays Landing, NJ, 08330

Price \$395,000.00



PROPERTY DETAILS

Total Rooms	7
Bedrooms	3
Baths Full	2
Baths Half	0
Year Built	
Type	Single Family
Block Number	538
Listing #	594223
Taxes	786.00

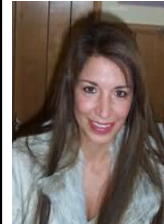
COMMENTS

CHOOSE YOUR COLORS with this New Construction on a Private 1-Acre Wooded Lot This brand-new 1,300 sq. ft. home is set 200 feet back from the road for added privacy. Located just 5 miles from the town centers of Mays Landing and Buena, this home offers both tranquility and convenience. Home Features: 3 Bedrooms, 2 Baths Open-concept living area with a split-bedroom desig...

PROPERTY FEATURES

ParkingGarage	Heating	Water	Sewer
None	Gas-Natural	Well	Septic

CONTACT



Ask for Joyce McMahon
Berger Realty Inc
3160 Asbury Avenue, Ocean City
Call:
Email to: jmm@bergerrealty.com

Scan to see Property page.

