

# Berger Realty

Since 1926



Berger Realty, Inc.  
55th & Haven Avenue  
Ocean City, NJ 08226  
609-399-0040  
info@bergerrealty.com



Somers Point Rd. / Connell Ave, Egg Harbor Township, NJ,  
08234

Price \$15,000.00

## PROPERTY DETAILS

Total Rooms	0
Bedrooms	0
Baths Full	0
Baths Half	0
Year Built	
Type	
Block Number	8004
Listing #	594090
Taxes	83.00

## COMMENTS

10,000 Square Foot Lot Per Egg Harbor Township zoning. Appropriate for neighboring properties to add square footage to their adjoining property. The Buyer has to perform all due diligence....

## PROPERTY FEATURES

## CONTACT



Ask for Martha Jamison  
Berger Realty Inc  
109 E 55th St., Ocean City  
Call: 609-675-6608  
Email to: mej@bergerrealty.com

Scan to see Property page.



# Berger Realty

Since 1926



Berger Realty, Inc.  
55th & Haven Avenue  
Ocean City, NJ 08226  
609-399-0040  
info@bergerrealty.com



Somers Point Rd. / Connell Ave, Egg Harbor Township, NJ,  
08234

Price \$15,000.00

## PROPERTY DETAILS

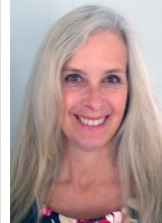
Total Rooms	0
Bedrooms	0
Baths Full	0
Baths Half	0
Year Built	
Type	
Block Number	8004
Listing #	594090
Taxes	83.00

## COMMENTS

10,000 Square Foot Lot Per Egg Harbor Township zoning. Appropriate for neighboring properties to add square footage to their adjoining property. The Buyer has to perform all due diligence....

## PROPERTY FEATURES

## CONTACT



Ask for Martha Jamison  
Berger Realty Inc  
109 E 55th St., Ocean City  
Call: 609-675-6608  
Email to: mej@bergerrealty.com

Scan to see Property page.

