



Berger Realty, Inc.
3160 Asbury Avenue
Ocean City, NJ 08226
1-877-237-4371 / 609-399-0076
info@bergerrealty.com



Between 7th-8th Bayfront Slip E1, Ocean City, NJ, 08226

Price \$25,000.00

PROPERTY DETAILS

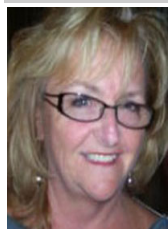
Total Rooms	
Bedrooms	0
Baths Full	0
Baths Half	0
Year Built	
Type	
Block Number	715
Listing #	593902
Taxes	71.00

COMMENTS

Just in time for the summer season. Check out this 20 ft. deeded boat slip in a great location behind the Nor'Easter complex between 7th & 8th Sts. Want to keep your watercraft up out of the water? Then you'll welcome the included floating dock which can accommodate a jet boat up to 19 ft. as well as a large 3-person jet ski or other type boats of 17 ft. or less. Slip ...

PROPERTY FEATURES

CONTACT



Ask for Evelyn "Evie" Schweibinz
Berger Realty Inc
3160 Asbury Avenue, Ocean City
Call:
Email to: ems@bergerrealty.com

Scan to see Property page.



Berger Realty, Inc.
3160 Asbury Avenue
Ocean City, NJ 08226
1-877-237-4371 / 609-399-0076
info@bergerrealty.com



Between 7th-8th Bayfront Slip E1, Ocean City, NJ, 08226

Price \$25,000.00

PROPERTY DETAILS

Total Rooms	
Bedrooms	0
Baths Full	0
Baths Half	0
Year Built	
Type	
Block Number	715
Listing #	593902
Taxes	71.00

COMMENTS

Just in time for the summer season. Check out this 20 ft. deeded boat slip in a great location behind the Nor'Easter complex between 7th & 8th Sts. Want to keep your watercraft up out of the water? Then you'll welcome the included floating dock which can accommodate a jet boat up to 19 ft. as well as a large 3-person jet ski or other type boats of 17 ft. or less. Slip ...

PROPERTY FEATURES

CONTACT



Ask for Evelyn "Evie" Schweibinz
Berger Realty Inc
3160 Asbury Avenue, Ocean City
Call:
Email to: ems@bergerrealty.com

Scan to see Property page.

