



Berger Realty, Inc.  
3160 Asbury Avenue  
Ocean City, NJ 08226  
1-877-237-4371 / 609-399-0076  
info@bergerrealty.com



33 Metropolitan Ave, Atlantic City, NJ, 08401

Price \$300,000.00



#### PROPERTY DETAILS

Total Rooms	4
Bedrooms	4
Baths Full	2
Baths Half	0
Year Built	
Type	Single Family
Block Number	00128
Listing #	593809
Taxes	3417.00

#### COMMENTS

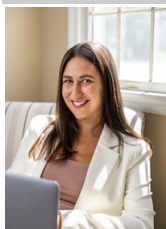
**LOCATION, LOCATION, LOCATION! INVESTOR ALERT!** This single-family property in Atlantic City is just two blocks from the Boardwalk and Ocean Casino Resort, and right across from the Absecon Lighthouse. The two-story property consists of four-bedrooms and two-bathrooms on the right side, and one-bedroom with one-bath on the left. With some vision and TLC, this can be transfor...

#### PROPERTY FEATURES

ParkingGarage	Heating	Cooling	Water
None	Gas-Natural	Central	Public

Sewer  
Public Sewer

#### CONTACT



Ask for Lauren Greiner  
Berger Realty Inc  
3160 Asbury Avenue, Ocean City  
Call: 609-602-5960  
Email to: lmg@bergerrealty.com

Scan to see Property page.



Berger Realty, Inc.  
3160 Asbury Avenue  
Ocean City, NJ 08226  
1-877-237-4371 / 609-399-0076  
info@bergerrealty.com



33 Metropolitan Ave, Atlantic City, NJ, 08401

Price \$300,000.00



#### PROPERTY DETAILS

Total Rooms	4
Bedrooms	4
Baths Full	2
Baths Half	0
Year Built	
Type	Single Family
Block Number	00128
Listing #	593809
Taxes	3417.00

#### COMMENTS

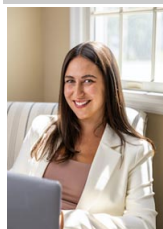
**LOCATION, LOCATION, LOCATION! INVESTOR ALERT!** This single-family property in Atlantic City is just two blocks from the Boardwalk and Ocean Casino Resort, and right across from the Absecon Lighthouse. The two-story property consists of four-bedrooms and two-bathrooms on the right side, and one-bedroom with one-bath on the left. With some vision and TLC, this can be transfor...

#### PROPERTY FEATURES

ParkingGarage	Heating	Cooling	Water
None	Gas-Natural	Central	Public

Sewer  
Public Sewer

#### CONTACT



Ask for Lauren Greiner  
Berger Realty Inc  
3160 Asbury Avenue, Ocean City  
Call: 609-602-5960  
Email to: lmg@bergerrealty.com

Scan to see Property page.

