

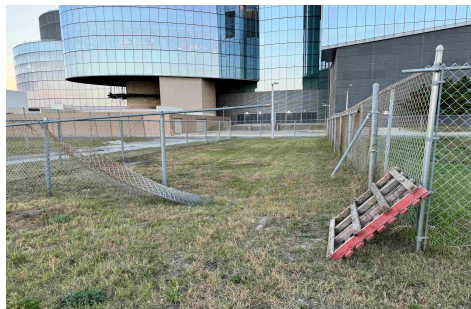


Berger Realty, Inc.  
3160 Asbury Avenue  
Ocean City, NJ 08226  
1-877-237-4371 / 609-399-0076  
info@bergerrealty.com



243 Metropolitan Ave, Atlantic City, NJ, 08401

Price \$250,000.00



#### PROPERTY DETAILS

Total Rooms	0
Bedrooms	0
Baths Full	0
Baths Half	0
Year Built	
Type	
Block Number	71
Listing #	593686
Taxes	1878.00

#### COMMENTS

*This prime ocean block property is located adjacent to the Ocean Casino in Atlantic City in the LH-2 District offering an unparalleled investment opportunity. Just steps away from the beach and the city's iconic Boardwalk, the lot provides a prime location for potential commercial and residential development. It is ideally positioned near the Island water park in the Show...*

#### PROPERTY FEATURES

#### CONTACT



Ask for Denise Kelley  
Berger Realty Inc  
3160 Asbury Avenue, Ocean City  
Call: 609-703-2706  
Email to: dlk@bergerrealty.com

Scan to see Property page.

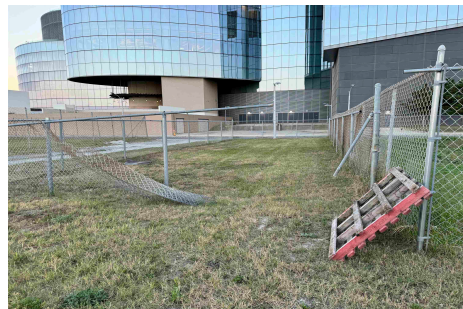


Berger Realty, Inc.  
3160 Asbury Avenue  
Ocean City, NJ 08226  
1-877-237-4371 / 609-399-0076  
info@bergerrealty.com



243 Metropolitan Ave, Atlantic City, NJ, 08401

Price \$250,000.00



#### PROPERTY DETAILS

Total Rooms	0
Bedrooms	0
Baths Full	0
Baths Half	0
Year Built	
Type	
Block Number	71
Listing #	593686
Taxes	1878.00

#### COMMENTS

*This prime ocean block property is located adjacent to the Ocean Casino in Atlantic City in the LH-2 District offering an unparalleled investment opportunity. Just steps away from the beach and the city's iconic Boardwalk, the lot provides a prime location for potential commercial and residential development. It is ideally positioned near the Island water park in the Show...*

#### PROPERTY FEATURES

#### CONTACT



Ask for Denise Kelley  
Berger Realty Inc  
3160 Asbury Avenue, Ocean City  
Call: 609-703-2706  
Email to: dlk@bergerrealty.com

Scan to see Property page.

