

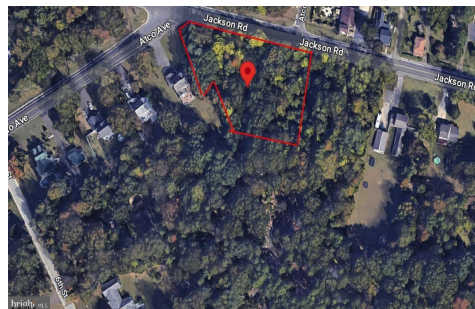


Berger Realty, Inc.  
3160 Asbury Avenue  
Ocean City, NJ 08226  
1-877-237-4371 / 609-399-0076  
info@bergerrealty.com



539 Jackson, Waterford Works, NJ, 08009

Price \$55,000.00



#### PROPERTY DETAILS

Total Rooms	
Bedrooms	0
Baths Full	0
Baths Half	0
Year Built	
Type	
Block Number	2801
Listing #	593520
Taxes	1837.00

#### COMMENTS

**CALLING ALL BUILDERS/INVESTORS!** This lot is being sold in conjunction with two other contiguous parcels zoned as Neighborhood Business District in the heart of Waterford Twp's own Atco Ave Business Community. See attached document for list of uses. Totaling about 2.5 acres of land, these lots are located on the corner of Atco Ave and Jackson Rd just a 3-minute drive away ...

#### PROPERTY FEATURES

#### CONTACT



Ask for Steven Spengler  
Berger Realty Inc  
3160 Asbury Avenue, Ocean City  
Call: 609-425-9253  
Email to: srs@bergerrealty.com

Scan to see Property page.



Berger Realty, Inc.  
3160 Asbury Avenue  
Ocean City, NJ 08226  
1-877-237-4371 / 609-399-0076  
info@bergerrealty.com



539 Jackson, Waterford Works, NJ, 08009

Price \$55,000.00



#### PROPERTY DETAILS

Total Rooms	
Bedrooms	0
Baths Full	0
Baths Half	0
Year Built	
Type	
Block Number	2801
Listing #	593520
Taxes	1837.00

#### COMMENTS

**CALLING ALL BUILDERS/INVESTORS!** This lot is being sold in conjunction with two other contiguous parcels zoned as Neighborhood Business District in the heart of Waterford Twp's own Atco Ave Business Community. See attached document for list of uses. Totaling about 2.5 acres of land, these lots are located on the corner of Atco Ave and Jackson Rd just a 3-minute drive away ...

#### PROPERTY FEATURES

#### CONTACT



Ask for Steven Spengler  
Berger Realty Inc  
3160 Asbury Avenue, Ocean City  
Call: 609-425-9253  
Email to: srs@bergerrealty.com

Scan to see Property page.

