

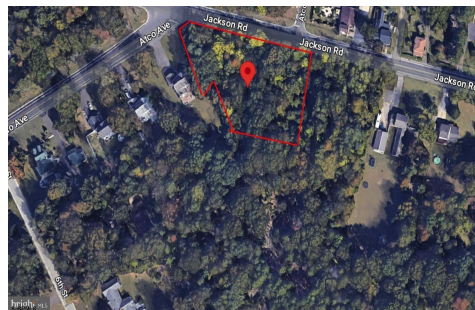


Berger Realty, Inc.
3160 Asbury Avenue
Ocean City, NJ 08226
1-877-237-4371 / 609-399-0076
info@bergerrealty.com



525 Jackson, Waterford Works, NJ, 08009

Price \$75,000.00



PROPERTY DETAILS

Total Rooms	
Bedrooms	0
Baths Full	0
Baths Half	0
Year Built	
Type	
Block Number	2801
Listing #	593517
Taxes	2022.00

COMMENTS

CALLING ALL BUILDERS/INVESTORS! This lot is being sold in conjunction with two other contiguous parcels zoned as Neighborhood Business District in the heart of Waterford Twp's own Atco Ave Business Community. See attached document for list of uses. Totaling about 2.5 acres of land, these lots are located on the corner of Atco Ave and Jackson Rd just a 3-minute drive away ...

PROPERTY FEATURES

CONTACT



Ask for Jeremy Kershbaumer
Berger Realty Inc
3160 Asbury Avenue, Ocean City
Call: 609-367-3669
Email to: jek@bergerrealty.com

Scan to see Property page.



Berger Realty, Inc.
3160 Asbury Avenue
Ocean City, NJ 08226
1-877-237-4371 / 609-399-0076
info@bergerrealty.com



525 Jackson, Waterford Works, NJ, 08009

Price \$75,000.00



PROPERTY DETAILS

Total Rooms	
Bedrooms	0
Baths Full	0
Baths Half	0
Year Built	
Type	
Block Number	2801
Listing #	593517
Taxes	2022.00

COMMENTS

CALLING ALL BUILDERS/INVESTORS! This lot is being sold in conjunction with two other contiguous parcels zoned as Neighborhood Business District in the heart of Waterford Twp's own Atco Ave Business Community. See attached document for list of uses. Totaling about 2.5 acres of land, these lots are located on the corner of Atco Ave and Jackson Rd just a 3-minute drive away ...

PROPERTY FEATURES

CONTACT



Ask for Jeremy Kershbaumer
Berger Realty Inc
3160 Asbury Avenue, Ocean City
Call: 609-367-3669
Email to: jek@bergerrealty.com

Scan to see Property page.

