



Berger Realty, Inc.  
3160 Asbury Avenue  
Ocean City, NJ 08226  
1-877-237-4371 / 609-399-0076  
info@bergerrealty.com



125 Shadeland Ave, Pleasantville, NJ, 08232

Price \$199,900.00



#### PROPERTY DETAILS

Total Rooms	
Bedrooms	0
Baths Full	0
Baths Half	0
Year Built	1955
Type	
Block Number	38
Listing #	593443
Taxes	6757.00

#### COMMENTS

*This is building that was use as chef salad before can be use as Warehouse with freezer and plenty space for storage and trailer in the back with 2600 Sqf. and parking lot with 11 or more parking space. Do not miss this opportunity to start a new business....*

#### PROPERTY FEATURES

Exterior Block	OutsideFeatures Fence Storage Building	ParkingGarage 11 or More Spaces Off Street Paved	InteriorFeatures Smoke/Fire Alarm Storage
Basement Slab	Heating Gas-Natural	Cooling Central	Water Public
Sewer Public Sewer			

#### CONTACT



Ask for Tara Crusier-Moss  
Berger Realty Inc  
3160 Asbury Avenue, Ocean City  
Call: 609-317-5396  
Email to: tcm@bergerrealty.com

Scan to see Property page.



Berger Realty, Inc.  
3160 Asbury Avenue  
Ocean City, NJ 08226  
1-877-237-4371 / 609-399-0076  
info@bergerrealty.com



125 Shadeland Ave, Pleasantville, NJ, 08232

Price \$199,900.00



#### PROPERTY DETAILS

Total Rooms	
Bedrooms	0
Baths Full	0
Baths Half	0
Year Built	1955
Type	
Block Number	38
Listing #	593443
Taxes	6757.00

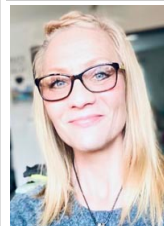
#### COMMENTS

*This is building that was use as chef salad before can be use as Warehouse with freezer and plenty space for storage and trailer in the back with 2600 Sqf. and parking lot with 11 or more parking space. Do not miss this opportunity to start a new business....*

#### PROPERTY FEATURES

Exterior Block	OutsideFeatures Fence Storage Building	ParkingGarage 11 or More Spaces Off Street Paved	InteriorFeatures Smoke/Fire Alarm Storage
Basement Slab	Heating Gas-Natural	Cooling Central	Water Public
Sewer Public Sewer			

#### CONTACT



Ask for Tara Crusier-Moss  
Berger Realty Inc  
3160 Asbury Avenue, Ocean City  
Call: 609-317-5396  
Email to: tcm@bergerrealty.com

Scan to see Property page.

