

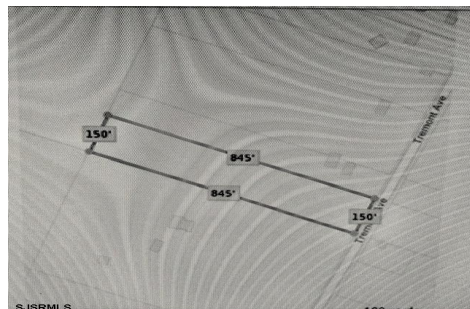


Berger Realty, Inc.  
3160 Asbury Avenue  
Ocean City, NJ 08226  
1-877-237-4371 / 609-399-0076  
info@bergerrealty.com



5032 Tremont, Egg Harbor Township, NJ, 08234

Price \$179,000.00



#### PROPERTY DETAILS

Total Rooms	
Bedrooms	0
Baths Full	0
Baths Half	0
Year Built	
Type	
Block Number	4004
Listing #	593347
Taxes	3223.00

#### COMMENTS

**New on Market! Buldable Lot with Pinelands Approval. Calling are desired Farm to Table Buyers! Developers, Homeowners come build your multi-family, single-family, and/or desired approval use. Buyers are responsible to perform all inspections, zoning, and due diligence. Call LB for details....**

#### PROPERTY FEATURES

#### CONTACT



Ask for Domenic Ballerini  
Berger Realty Inc  
3160 Asbury Avenue, Ocean City  
Call: 856-524-8122  
Email to: [dvb@bergerrealty.com](mailto:dvb@bergerrealty.com)

Scan to see Property page.

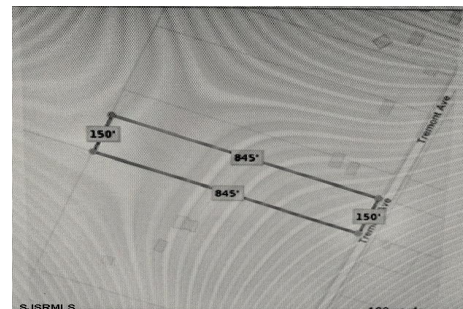


Berger Realty, Inc.  
3160 Asbury Avenue  
Ocean City, NJ 08226  
1-877-237-4371 / 609-399-0076  
info@bergerrealty.com



5032 Tremont, Egg Harbor Township, NJ, 08234

Price \$179,000.00



#### PROPERTY DETAILS

Total Rooms	
Bedrooms	0
Baths Full	0
Baths Half	0
Year Built	
Type	
Block Number	4004
Listing #	593347
Taxes	3223.00

#### COMMENTS

**New on Market! Buldable Lot with Pinelands Approval. Calling are desired Farm to Table Buyers! Developers, Homeowners come build your multi-family, single-family, and/or desired approval use. Buyers are responsible to perform all inspections, zoning, and due diligence. Call LB for details....**

#### PROPERTY FEATURES

#### CONTACT



Ask for Domenic Ballerini  
Berger Realty Inc  
3160 Asbury Avenue, Ocean City  
Call: 856-524-8122  
Email to: [dvb@bergerrealty.com](mailto:dvb@bergerrealty.com)

Scan to see Property page.

