

Berger Realty

Since 1926



Berger Realty, Inc.
3160 Asbury Avenue
Ocean City, NJ 08226
1-877-237-4371 / 609-399-0076
info@bergerrealty.com



209 Shadeland, Pleasantville, NJ, 08232

Price \$285,000.00

PROPERTY DETAILS

Total Rooms	
Bedrooms	0
Baths Full	0
Baths Half	0
Year Built	
Type	
Block Number	33
Listing #	593153
Taxes	6099.00

COMMENTS

NEW on market TRIPLEX - OWNER OCCUPY, INVESTOR FIX & FLIP, FIX & HOLD!! \$4500 potential monthly income and positive equity. >MIXED USE: TRIPLEX comprised of UP/DOWN DUPLEX & Separate Block Building >DOWNSTAIRS UNIT: Need Renovating; 2 Br, 1 Ba, LiR, Form DR, Kitchen, Cellar. >UPSTAIRS: CO inspect Ready! 2 Br, 1 Ba, Living Rm, E-I-K, Sunporch with optional uses: ...

PROPERTY FEATURES

ParkingGarage	Basement	Heating	Water
None	Masonry Floor/Wall	Baseboard	Public
	Partial		
	Unfinished		

Sewer
Public Sewer

CONTACT



Ask for Joyce McMahon
Berger Realty Inc
3160 Asbury Avenue, Ocean City
Call:
Email to: jmm@bergerrealty.com

Scan to see Property page.



Berger Realty

Since 1926



Berger Realty, Inc.
3160 Asbury Avenue
Ocean City, NJ 08226
1-877-237-4371 / 609-399-0076
info@bergerrealty.com



209 Shadeland, Pleasantville, NJ, 08232

Price \$285,000.00

PROPERTY DETAILS

Total Rooms	
Bedrooms	0
Baths Full	0
Baths Half	0
Year Built	
Type	
Block Number	33
Listing #	593153
Taxes	6099.00

COMMENTS

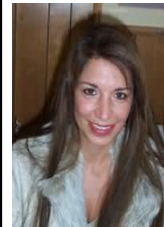
NEW on market TRIPLEX - OWNER OCCUPY, INVESTOR FIX & FLIP, FIX & HOLD!! \$4500 potential monthly income and positive equity. >MIXED USE: TRIPLEX comprised of UP/DOWN DUPLEX & Separate Block Building >DOWNSTAIRS UNIT: Need Renovating; 2 Br, 1 Ba, LiR, Form DR, Kitchen, Cellar. >UPSTAIRS: CO inspect Ready! 2 Br, 1 Ba, Living Rm, E-I-K, Sunporch with optional uses: ...

PROPERTY FEATURES

ParkingGarage	Basement	Heating	Water
None	Masonry Floor/Wall	Baseboard	Public
	Partial		
	Unfinished		

Sewer
Public Sewer

CONTACT



Ask for Joyce McMahon
Berger Realty Inc
3160 Asbury Avenue, Ocean City
Call:
Email to: jmm@bergerrealty.com

Scan to see Property page.

