



Berger Realty, Inc.  
3160 Asbury Avenue  
Ocean City, NJ 08226  
1-877-237-4371 / 609-399-0076  
info@bergerrealty.com



8th, Mays Landing, NJ, 08330

Price \$99,000.00



#### PROPERTY DETAILS

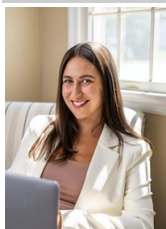
Total Rooms	
Bedrooms	0
Baths Full	0
Baths Half	0
Year Built	
Type	
Block Number	2602
Listing #	593151
Taxes	

#### COMMENTS

*RDR1. Rural Development Residence Available Lot Dreaming of having your home custom built or selecting a beautiful manufactured home to be dropped on vacant land? Here's 1.21 acres for your home, home & office, or farm & your fleet of vehicles!! Pinelands credit required....*

#### PROPERTY FEATURES

#### CONTACT



Ask for Lauren Greiner  
Berger Realty Inc  
3160 Asbury Avenue, Ocean City  
Call: 609-602-5960  
Email to: lmg@bergerrealty.com

Scan to see Property page.



Berger Realty, Inc.  
3160 Asbury Avenue  
Ocean City, NJ 08226  
1-877-237-4371 / 609-399-0076  
info@bergerrealty.com



8th, Mays Landing, NJ, 08330

Price \$99,000.00



#### PROPERTY DETAILS

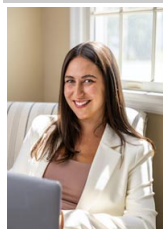
Total Rooms	
Bedrooms	0
Baths Full	0
Baths Half	0
Year Built	
Type	
Block Number	2602
Listing #	593151
Taxes	

#### COMMENTS

*RDR1. Rural Development Residence Available Lot Dreaming of having your home custom built or selecting a beautiful manufactured home to be dropped on vacant land? Here's 1.21 acres for your home, home & office, or farm & your fleet of vehicles!! Pinelands credit required....*

#### PROPERTY FEATURES

#### CONTACT



Ask for Lauren Greiner  
Berger Realty Inc  
3160 Asbury Avenue, Ocean City  
Call: 609-602-5960  
Email to: lmg@bergerrealty.com

Scan to see Property page.

