

Berger Realty

Since 1926



Berger Realty, Inc.
3160 Asbury Avenue
Ocean City, NJ 08226
1-877-237-4371 / 609-399-0076
info@bergerrealty.com



6150 Mill, Egg Harbor Township, NJ, 08234

Price \$3,800,000.00

PROPERTY DETAILS

Total Rooms	
Bedrooms	0
Baths Full	0
Baths Half	0
Year Built	
Type	
Block Number	3327
Listing #	593096
Taxes	16522.00

COMMENTS

A,J, Puggi Recycling Inc., Established natural recycling business with 19.2 acres including equipment and operating vehicles. Business specializes in recycling/sale of bricks, pavers, mulch, wood chips, stone, asphalt, sod, brush etc. Zoned RG1 with land uses including single family dwellings, farming (including solar farming). 40x 60x16H shop and one 600 square ft office ...

PROPERTY FEATURES

CONTACT



Ask for Sara Varani
Berger Realty Inc
3160 Asbury Avenue, Ocean City
Call:
Email to: sev@bergerrealty.com

Scan to see Property page.



Berger Realty

Since 1926



Berger Realty, Inc.
3160 Asbury Avenue
Ocean City, NJ 08226
1-877-237-4371 / 609-399-0076
info@bergerrealty.com



6150 Mill, Egg Harbor Township, NJ, 08234

Price \$3,800,000.00

PROPERTY DETAILS

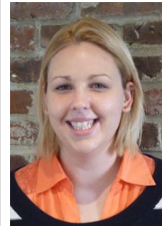
Total Rooms	
Bedrooms	0
Baths Full	0
Baths Half	0
Year Built	
Type	
Block Number	3327
Listing #	593096
Taxes	16522.00

COMMENTS

A,J, Puggi Recycling Inc., Established natural recycling business with 19.2 acres including equipment and operating vehicles. Business specializes in recycling/sale of bricks, pavers, mulch, wood chips, stone, asphalt, sod, brush etc. Zoned RG1 with land uses including single family dwellings, farming (including solar farming). 40x 60x16H shop and one 600 square ft office ...

PROPERTY FEATURES

CONTACT



Ask for Sara Varani
Berger Realty Inc
3160 Asbury Avenue, Ocean City
Call:
Email to: sev@bergerrealty.com

Scan to see Property page.

