

Berger Realty

Since 1926



Berger Realty, Inc
1330 Bay Avenue
Ocean City, NJ 08226
609-391-1330/609-391-1300
info@bergerrealty.com



46 Maryland, Atlantic City, NJ, 08401

Price \$289,000.00

PROPERTY DETAILS

Total Rooms	8
Bedrooms	4
Baths Full	2
Baths Half	1
Year Built	1900
Type	Single Family
Block Number	301
Listing #	593005
Taxes	3569.00

COMMENTS

Mixed Use Property! 1st Floor has 2 rooms and a powder room, business/commercial customize to suit your dreams! 2nd and 3 floors are a residential unit featuring 3-4 bedrooms/2.0 baths. Being sold \"As-Is\" condition, Buyer responsible for city inspections and/or certifications. Buyer responsible for verifying that their intended use of the property will be approved by the...

PROPERTY FEATURES

Exterior	ParkingGarage	Heating	Water
Stucco	None	Gas-Natural	Public

Sewer
Public Sewer

CONTACT



Ask for Cassidy Fletcher
Berger Realty Inc
1330 Bay Avenue, Ocean City
Call: 609-425-6121
Email to: crf@bergerrealty.com

Scan to see Property page.



Berger Realty

Since 1926



Berger Realty, Inc
1330 Bay Avenue
Ocean City, NJ 08226
609-391-1330/609-391-1300
info@bergerrealty.com



46 Maryland, Atlantic City, NJ, 08401

Price \$289,000.00

PROPERTY DETAILS

Total Rooms	8
Bedrooms	4
Baths Full	2
Baths Half	1
Year Built	1900
Type	Single Family
Block Number	301
Listing #	593005
Taxes	3569.00

COMMENTS

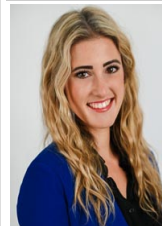
Mixed Use Property! 1st Floor has 2 rooms and a powder room, business/commercial customize to suit your dreams! 2nd and 3 floors are a residential unit featuring 3-4 bedrooms/2.0 baths. Being sold \"As-Is\" condition, Buyer responsible for city inspections and/or certifications. Buyer responsible for verifying that their intended use of the property will be approved by the...

PROPERTY FEATURES

Exterior	ParkingGarage	Heating	Water
Stucco	None	Gas-Natural	Public

Sewer
Public Sewer

CONTACT



Ask for Cassidy Fletcher
Berger Realty Inc
1330 Bay Avenue, Ocean City
Call: 609-425-6121
Email to: crf@bergerrealty.com

Scan to see Property page.

